

The Pennsylvania State University Arboretum

Land Use and Owners

The Pennsylvania State University Arboretum Landscape History

January 2002
Laura Enghofer

CONTENTS:

Methods_____ **1**

Introduction

The Arboretum_____ **2**

The Land_____ **3**

Land Use

Centre Furnace_____ **4**

The Railroad_____ **8**

After Centre Furnace_____ **9**

Summary_____ **11**

Appendices

A: Property maps_____ **A1**

B: Property descriptions_____ **B1**

C: Deed information_____ **C1**

**D: Timeline for Development of
Centre County**_____ **D1**

E: Photographs_____ **E1**

F: Bibliography_____ **F1**

Methods

Much of the research for this document took place at the Pennsylvania State University. It was there that old campus planning documents, campus maps, deeds and even Centre Furnace documents were found. Research first told a general story about Centre County. The general history was, essentially, that the land on which Penn State's University Park campus sits was once forested; then the forest was harvested and then farmed. Only after this general history was revealed did a more detailed story come to light. This story started to come together in the University archives, with evidence that included maps, photographs and books.

As the story started to emerge, other resources suggested themselves. Several Penn State students wrote theses on some aspect of Centre County history, with subjects including the pre-settlement vegetation, the development of the railroads and locations of important ore mines and quarries from the days of the Centre Furnace. Some of these were written decades ago, and to some extent offered a view of what the "current" State College was like, even if it offered little information about the specific plot of land in question.

In order to find information about the specific plots of land, I went to the deeds. These were

found in the Willowbank Building in Bellefonte, Centre county's county seat. These provided the original boundaries of the land, the names of the current owner(s) and several previous owners as well as the names of the neighbors. They also contained some information about the land itself, such as that it was farmland.

Other resources included the Maps Library and Architecture Library at Penn State and the Centre County Historical Society. I met with Jackie Melander at the Historical Society, who later put me in touch with W. Douglas McNeal. Douglas McNeal has researched and written much about the Centre Furnace lands, and offered some useful ideas for resources.

Introduction

The Arboretum

The Pennsylvania State University recently made plans to construct an arboretum at its University Park campus in Centre County, Pennsylvania. It turns out that the idea of an arboretum on campus is not new. There has been a history at the University of planning for an arboretum only to later abandon the idea, usually due, at least in part, to lack of funds.

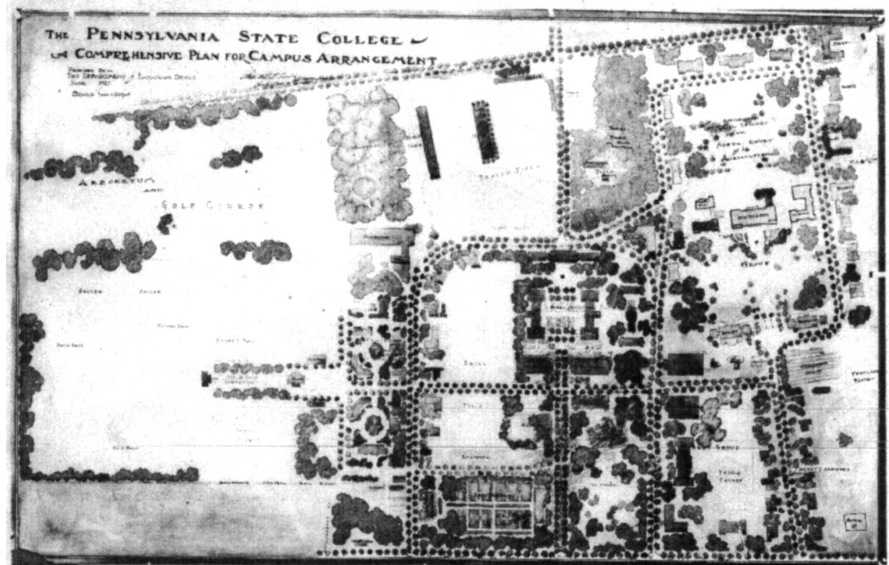
Arboretums on campuses is hardly a new idea. Of all of the arboretums in the U. S., fifty percent are governed by educational institutions (Correll, 1980). Some schools, such as Smith College, were designed to incorporate an arboretum throughout the campus (Van Schaik 1971). The idea of an arboretum for Penn State dates back to the beginnings of the school. Being an agricultural school, an effort was made from the beginning to plant a variety of trees on the campus. In 1882, a survey was

done by Prof. William A. Buckhout, who reported that there were 110 different varieties and species on campus. Around the turn of the century, Prof. J. Pillsbury and Prof. William T. Butz planted even more trees on campus. By 1911, Prof. Pillsbury estimates that there are 400 varieties and species on campus (Stout, 1997).

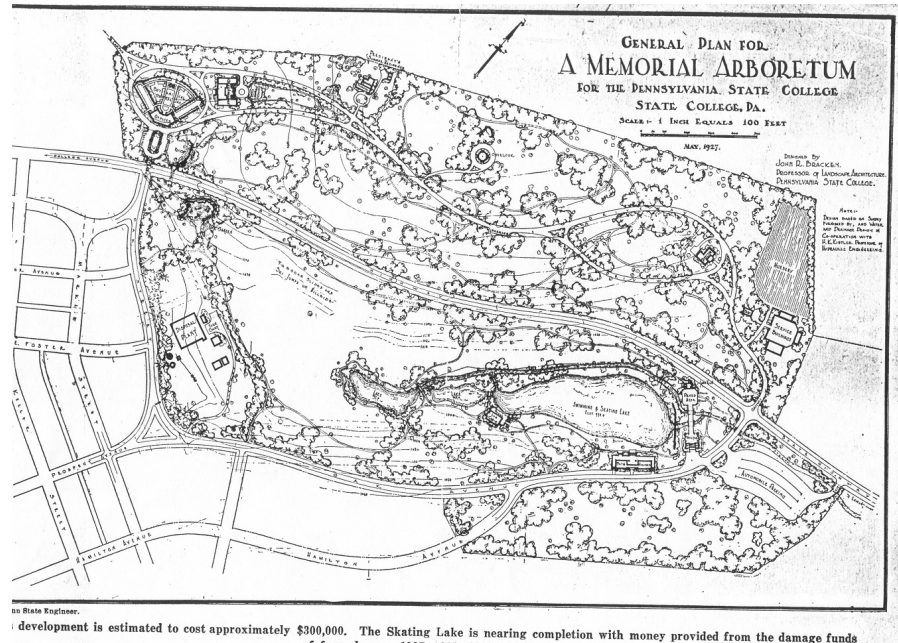
In 1907 the first campus development plan, developed by Charles Lowrie, was accepted by the Board of Trustees. It proposed maintaining large stands of trees on campus, near the present-day Nittany Lion Inn and in "Hort Woods." It also proposed botanical gardens and greenhouses to be located adjacent to future agricultural buildings.

The 1907 plan did not result in an arboretum for the campus. Another plan, done in 1914, proposed that 25 acres be set aside for an arboretum. The 25 acres were located in what is now the northeast corner of the golf course. It never became

First comprehensive plan for campus; note the designation of space for an arboretum in the upper left-hand corner (design by Charles Lowrie, copy found in PSU archives)



The 1926 plan for a memorial arboretum located where present-day College Ave. is. The Depression halted development of it (design by J. R. Bracken, copy found in PSU archives).



an arboretum; in 1925 it was decided to put in a golf course. In the same year, a memorial arboretum was proposed by Landscape Architecture Prof. John R. Bracken. Bracken went on to get a Doctorate of Philosophy from the University of Michigan in 1945. His dissertation was published twice after having been revised and was titled “Planting Design: principles and practices in the use of planting materials by the landscape architect.” His proposed arboretum from Penn State was to be located on what is now College Ave. The senior classes of 1927 – 1931 pledged their class gifts to this project, but due to the Depression further funding became unavailable.

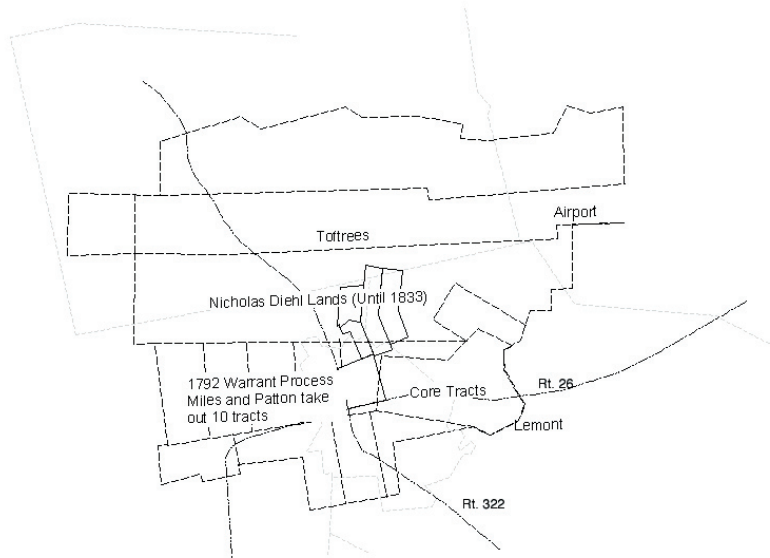
A 1973 report says that the campus should be recognized as an arboretum, as it had over 750 species. Land was set aside that year for an official arboretum. Tracts of land north of Park Avenue were thought to be the most suitable, making a tract

of about 320 acres. Fund raising activities move slowly, and in 1980 a booklet was created to help advance the project. In 1992 and 1993 there is another flurry of interest, but no further progress was made (Stout, 1997).

The Land

This tract of land, like most of Centre County, was once forested. Most of the land for the proposed arboretum was once owned by the Centre Furnace. The basic history of lands owned by Centre Furnace is simply that they were cleared, then farmed. The forests provided fuel (charcoal) to run the cold-blast iron furnaces. The furnaces also needed limestone to remove impurities from the iron, which was provided by local quarries. This limestone also yielded fertile soil for farming. Once land was cleared of its forest, it was generally farmed, especially during the ownership of Moses Thompson. By the time the fur-

The extent of the Centre Furnace Lands. Map source: Centre County Heritage, vol. 32 number 2



nance closed for good, most of its land was in use as farms.

There is one section of the arboretum that appears to never have been owned by the Centre Furnace. This is now known as the Mitchell Tract. It is part of a larger tract of land that was originally patented by James Hartely. It was sold by Hartely to John Krumrine, and, though it was broken into several different pieces, it stayed in the family (being passed on to both

sons and daughters) until the late 1800s. When the patent was taken out by Hartely, there were no settlements nearby. By the time the land passed out of the Krumrine family, Penn State was in existence.

Sources:

Bracken, John R. (1925). *Plan for a Memorial Arboretum*. map Pennsylvania State University, State College, 1925

Map of original warrants (T. H. Moore). The Centre Furnace lands are outlined in black. The warrant in the name Hartely (outlined in blue) includes the current-day Mitchell Estate. Map source: Centre County Heritage, vol. 32 number 1



Bracken, John R. (1945). *Planting Design: principles and practices in the use of planing materials by the landscape architect*. diss. University of Michigan (State College, 1957)

Correll, Philip G. (1980). *Botanical Gardens and Arboreta of North America: an organizational survey*. American Association of Botanical Gardens and Arboreta: Los Angeles, CA.

Lowrie, Charles N. (1907). *A Report and Plan for the Campus and Grounds of the Pennsylvania State University*. Pennsylvania State College: State College, PA.

Stout, Lee. (1997). *Arboretum Cronology*. unpublished manuscript

Van Schaik, Mary Mattison. (1971). *The Gardens and Arboretum of Smith College*. Nimrod Press: Boston, MA.

Land Use

Centre Furnace

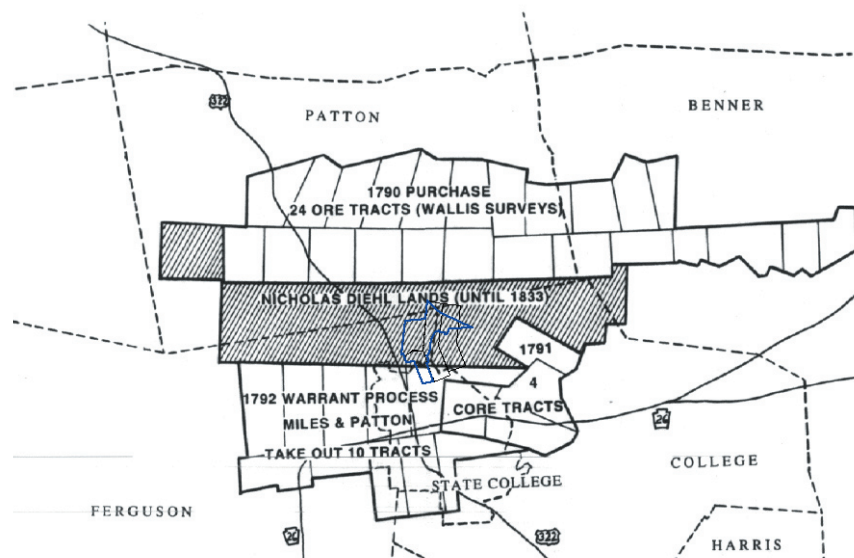
The history of State College would be incomplete without including the history of the Centre Furnace. That history starts back in 1765, which is when Col. John Patton and Col. Samuel Miles started buying tracts of land in what is now Centre County. Before the furnace was even built, Patton owned nearly all of what is now Patton, College and Harris townships while Miles owned College, Benner and Spring townships (Stevens, 1985). On these tracts of land they found all of the necessary ingredients for manufacturing charcoal iron: iron ore, hardwood forests (to make the charcoal), limestone (to remove impurities) and running water (to run the bellows). In 1792 they went into business together and opened the Centre Furnace.

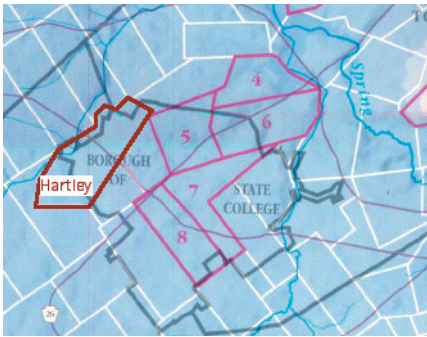
Running a charcoal iron furnace noticeably alters the landscape.

Mines had to be created to obtain the ore and quarries were needed to provide the limestone. The forests were continually harvested for more than 50 years, starting with the opening of the furnace. Hardwood was preferred for the making of charcoal; however, continued harvesting slowly depleted the forests (Maynard, 1877).

Once land was cleared of its trees, it was not reforested; the land was typically used for farming (Mitchell, 1915). The same limestone that made running a furnace possible also yielded a fertile soil that allowed these farms to be quite productive. The farms produced potatoes, hay, oats, corn and rye. The hay and straw that the farms produced went to feeding company-owned beasts of burden. Some of the grains raised on the furnace farms were sent to Lewisburgh, but much of it supplied flour and corn meal for the village (Stevens, 1985). By 1800 Nittany Valley was checkered

This map shows the extent of the Centre Furnace Lands. The blue outline shows the proposed arboretum boundary. Also shown are the boundaries of the tracts of land that form the arboretum as the boundaries existed when Penn State purchased the land. Base map source: Douglas McNeal, Centre County Heritage, vol. 32 number 2



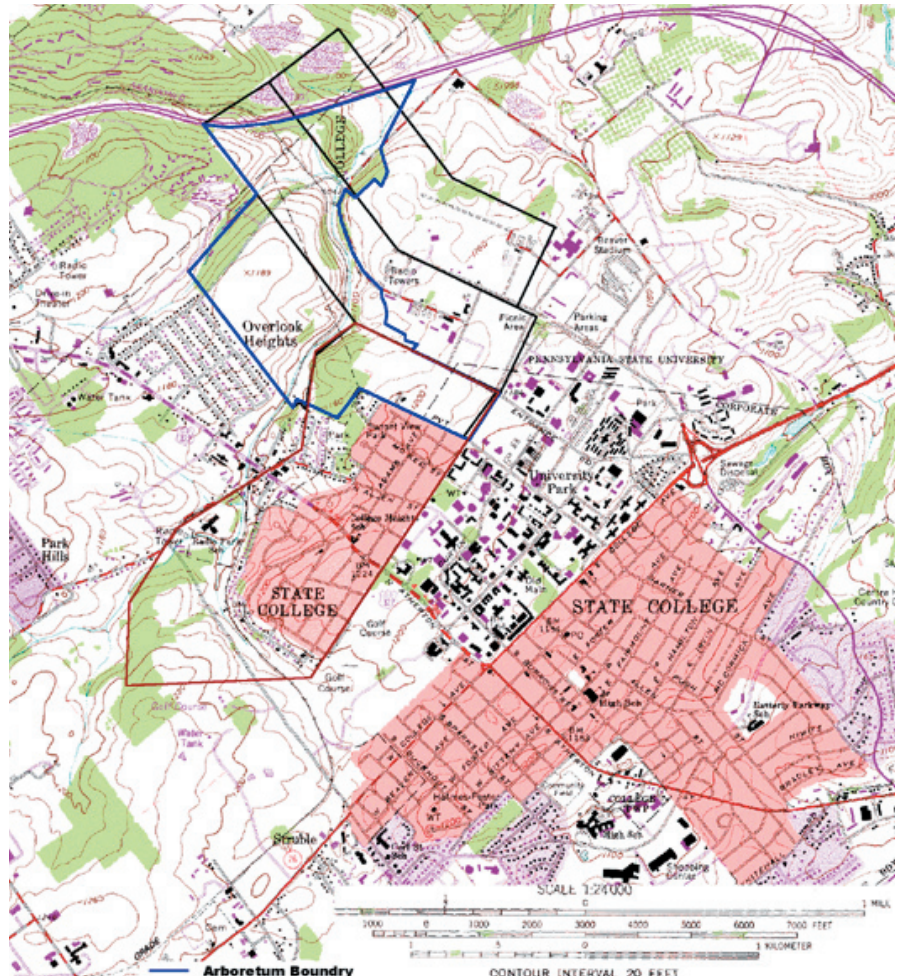


Outlined in red is the disputed Hartley warrant. The numbered warrants were purchased by Miles and Patton, but the Hartley warrant was eventually purchased by Krumrine (map published by Deasy GeoGraphics Lab).

with both farms and forests. In 1809 the furnace closed for 15 years. While this year corresponds with the death of the furnace's owners, the difficulty in obtaining wood suitable for making charcoal may have been a contributing factor in the closure. In 1828 John Irvin purchased the furnace from Miles' and Patton's heirs with business partner William Houston and son General James Irvin. In 1833 the furnace purchased eleven land warrants – and the pine forests that stood on them - from Nicholas Diehl. Following his father's death in 1838, James Irvin bought out William Houston and gained full control of the Centre Furnace (Chalana, 1999). James Irvin had a generous

nature (McNeal, 2002). When there was talk of opening a school for farmers in Pennsylvania, he offered a donation of 200 acres on which the school could be located. Other donations in other counties were also made, but in 1855 the Farmer's High School opened in Centre County on 200 acres of former Centre Furnace land. By this time, most of the Centre Furnace lands were in use as farms (Chalana, 1999).

It appears that the donation of land to the Farmer's High School may have led to a land dispute. According to Stevens (1985), General Irvin had intended to donate land north of what is now Park Ave to the school, only to discover that he did not own it.



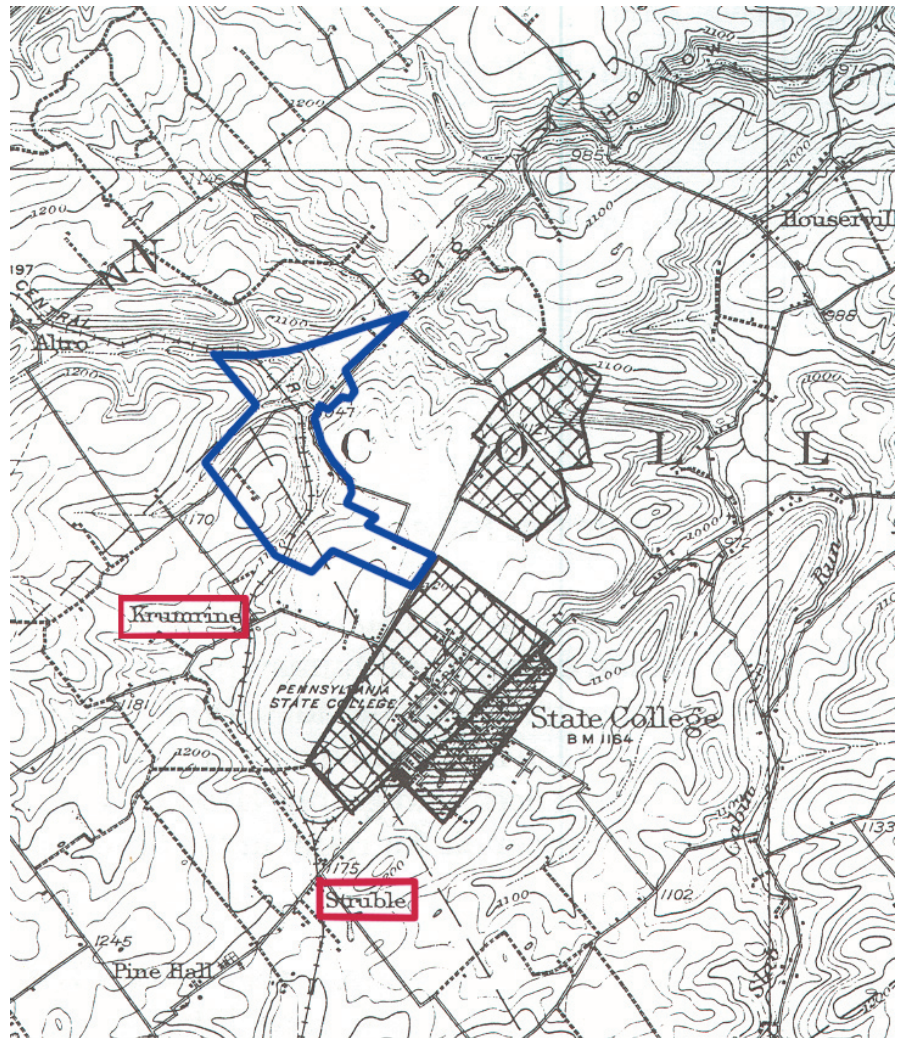
The Hartley warrant (outlined in red) shown on a USGS map. The arboretum boundary is outlined in blue and the individual farms that make up the arboretum are shown in black.

Stevens states that the warrants for this land had never been translated into patents. The land was then resurveyed and legally obtained by Frederick Krumrine. Douglas McNeal, in his research of the Centre Furnace, had come across references to this dispute but did not know the outcome (2002). However, there is reason to believe the Centre Furnace had never had a legal claim to this land. In 1784, eight years before Centre Furnace opened, James Hartley surveyed this land and had obtained a patent for it. He sold this patent to Frederick Krumrine, and the land stayed within the Krumrine family until 1882. This tract of land was eventually broken into several

tracts, one of which is to be a part of the arboretum.

The Railroad

The presence of iron had an effect on the development of State College even after the Centre Furnace went out of blast. In 1884 the Buffalo Run, Bellefonte and Bald Eagle Railroad (later to become Bellefonte Central Railroad) started work on a new line. The object of this line was to reach the farm of C. R. Struble, who wanted to mine the iron ore on his land. Although State College was between Bellefonte and Struble's farm, the stop closest to State College was Krumrine, which



The map at the right shows State College as it was in 1910. The blue line is the arboretum boundary (approximate). The railroad stations of Krumrine and Struble are marked in red (base map: McNeal, 1996).

was located along present-day Atherton St. Passenger service to and from Bellefonte began in 1887. If your final destination was State College, you had an additional mile to go from the station at Krumrine.

It wasn't until the Bellefonte Central Railroad bought the line in 1890 that an extension into State College was built. Under the ownership of Bellefonte Central Railroad, the line through the arboretum land saw its most profitable years. Between 1900 and 1906 the railroad was making profits from \$10,000 to \$25,000. This was from both passenger and freight income. After 1906, passenger traffic began to decline and was discontinued altogether in 1945. Freight income kept the railroad alive until 1975, when the Bellefonte Central Railroad dissolved the company.

After Centre Furnace

As the importance of the iron furnace started to decline, farming became more and more important. Immediately prior to the formation of the Farmer's High School, State College was divided among only six landholders, all of whom were engaged in farming. Gen. Irvin still held most of the Centre Furnace lands. William Foster and Robert M. Foster owned most of what is now downtown State College, bounded on the north side by Centre Furnace and Spruce Creek Turnpike (now College Ave.)(Ferree,1932). The other three landholders were Frederick Krumrine, John C. Krumrine and John Neidigh. They owned most of the land north of Park Ave, which had never been Centre Furnace land (being the land of

This photograph, taken between 1930 and 1950, still shows much of the land as woodlots or farms. Old Main is circled in blue in the lower left hand corner; the black line towards the center is Park Ave. Photo found in Penn State archives.



the Hartley warrant). There are still Krumrines in State College; the current Director of Development for the College of Agricultural Sciences, John Krumrine, is the greatgrandson of John C. Krumrine. John C. Krumrine had nine children: Lydia, John Nevin (the current John Krumrine's grandfather), Adam, Jake, Margaret, Catherine, Sally, Sydney, and Christina (Krumrine, 2001). The Mitchell Tract is a portion of what was once John Neidigh's farm.

After marrying Irvin's sister, Moses Thompson became heir to the remainder of the Centre Furnace lands (Lee, 1965). He divided the land into five working farms which he called Pond Bank, Mountain, Furnace, Sunset and Palo Alto (Stevens, 1985). These got sold off piece by piece, but for the most part remained farms. Even as parcels of land were bought by Penn State, much was used for experimental farms, including 40 acres adjacent to the Thompson tract.

Sources:

Chalana, Manish. (1999). *The Landscape of Charcoal Iron: Finding and Retaining the Landscape history of Centre Furnace in the Face of Change*. Pennsylvania State University: Thesis

Ferree, Walter Lincoln. (1932). *An introduction to the history of State College, Pennsylvania*. thesis Pennsylvania State University.

Krumrine, John. (2001). e-mail Oct.

Lee, J. Marvin. (1965). *Centre County: The County in Which We Live*. State College PA.

Maynard, D. S. (1877). *Industries and Institutions of Centre County: with historical sketches of principal villages*. State College PA; 1877

McNeal, W. Douglas. (2002). Personal Interview Jan. 29.

Mitchell, J. Thomas. (1915) *Centre County: From its Earliest Settlement to the Year 1915*. State College PA.

Stevens, Sylvester Kirby. (1985). *The Centre Furnace story : a return to our roots*. Centre County Historical Society: State College PA; 1985.

Summary

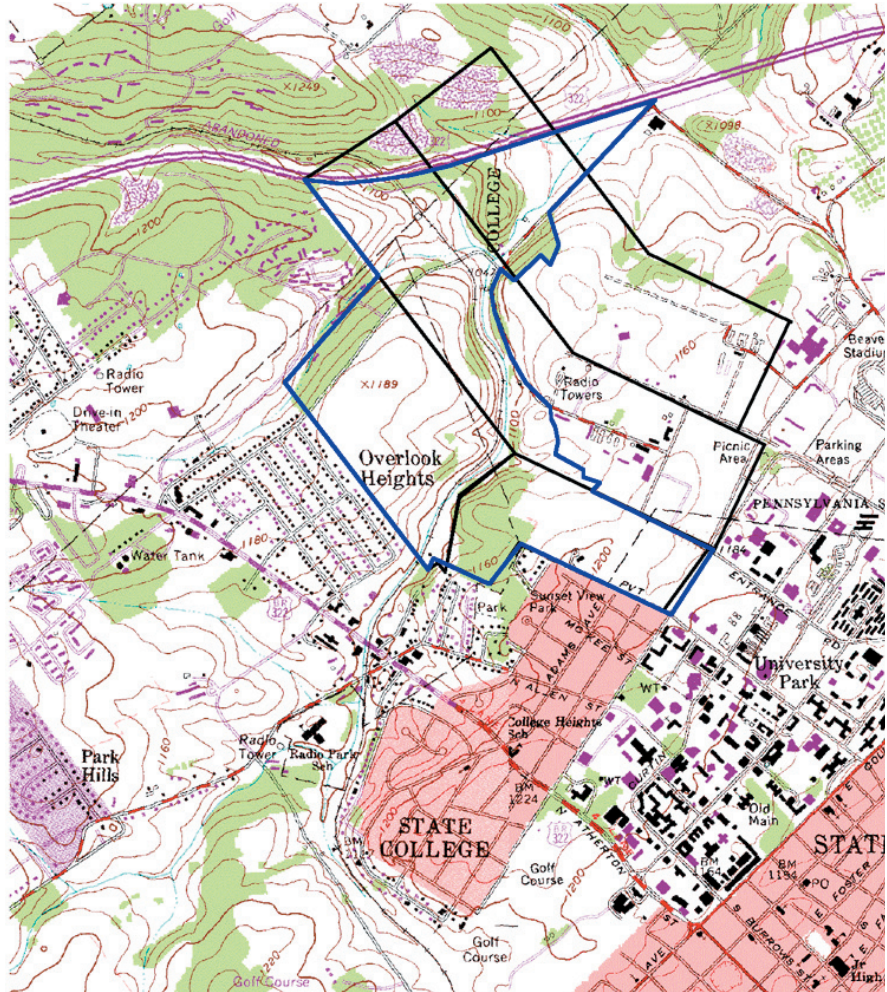
While much of the land to be Penn State's arboretum shares a history involving the Centre Furnace, one parcel, known as the Mitchell Tract, does not. The Centre Furnace lands were harvested of their forests, then the land was cleared for farming. Under the ownership of Gen. James Irvin, and later Moses Thompson, the Centre Furnace lands began to break apart and be sold to individual farmers. The Centre Furnace officially closed in 1858, three years after the establishment of the Farmer's High School, which became the Pennsylvania State University.

The arboretum land that is now known as the Mitchell Tract was first owned by James Hartley. It was next sold to Frederick Krumrine. It stayed within the Krumrine family for the next fifty years. When Frederick bought the land, the deed described it as being surrounded by vacant land. When it moved out of the family in 1882, it was bordered on one side by Penn State.

Penn State started acquiring the tracts of land that make up the arboretum in 1922, but did not own all of the land until 1989. The tracts are named for the last owner before Penn State.

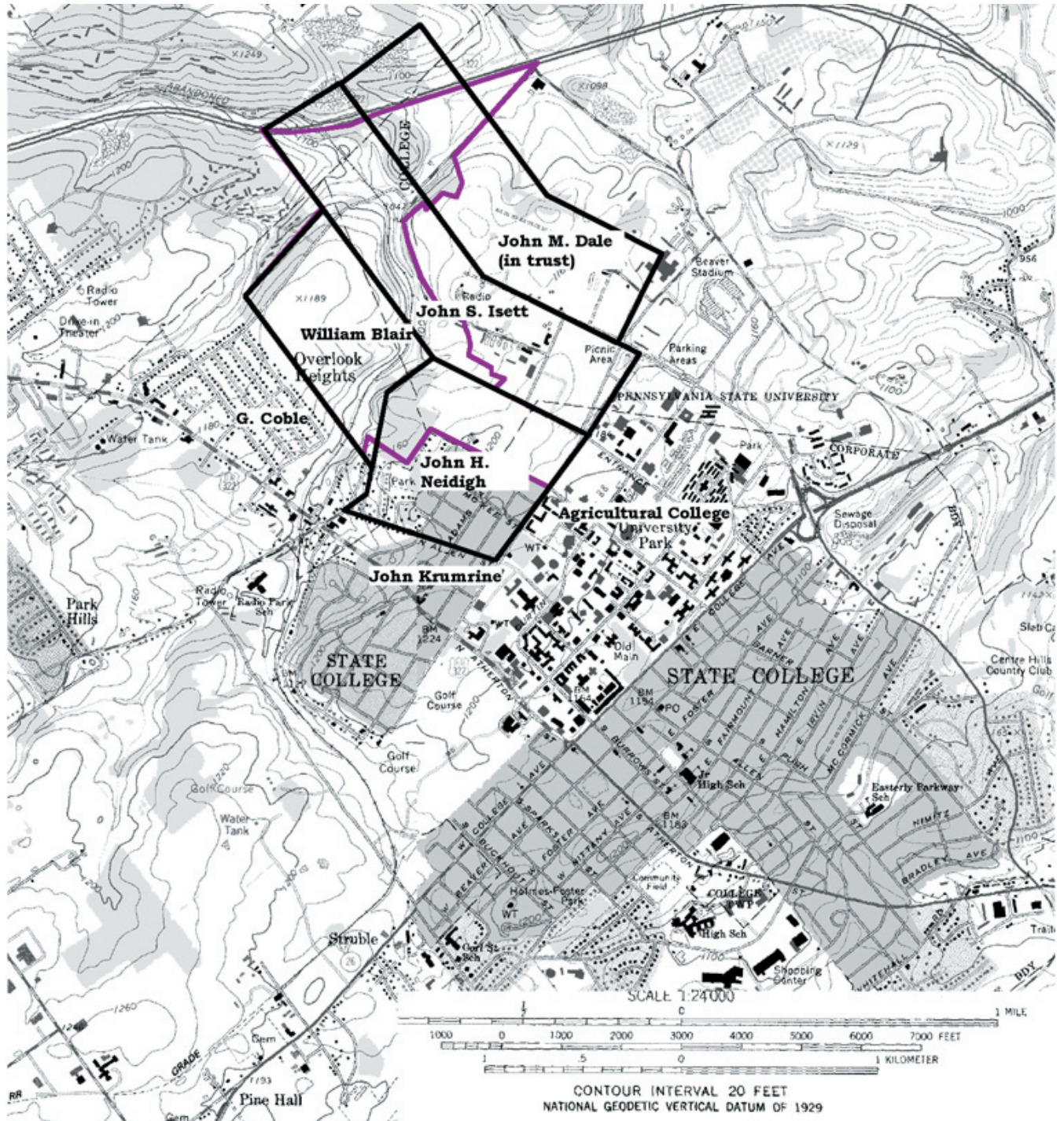
Appendices

Appendix A: Maps

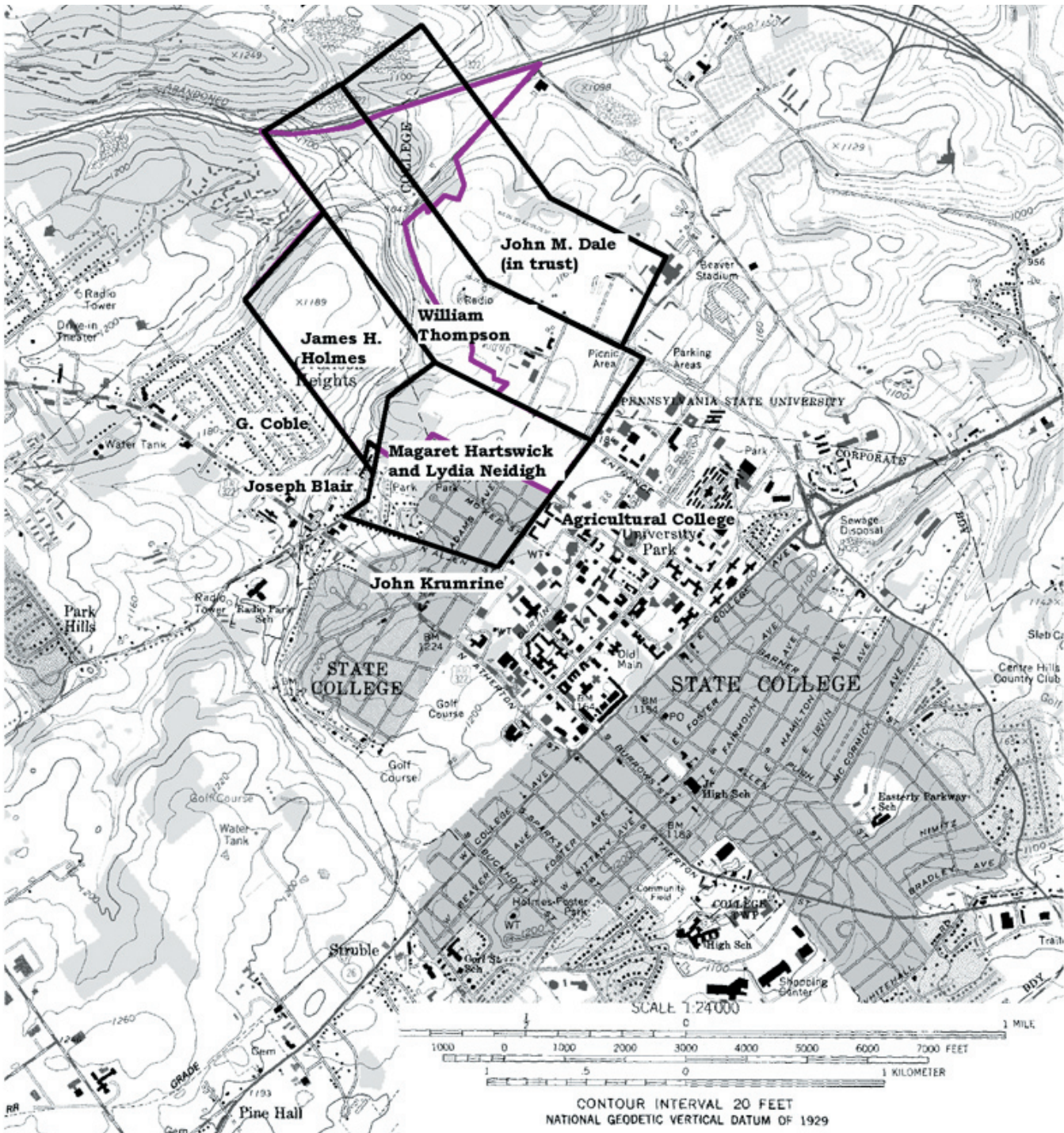


The following maps were created using the descriptions of property boundaries found in the deeds. The descriptions can be found in the following appendix. Due to some properties overlapping according to the descriptions, some lines have been moved slightly to avoid such overlapping. It was my experience, as was the experience of Douglas McNeal, that the older deeds seemed to be more accurate; the older (pre-1900) deeds had little overlapping, while most of the problems occurred in the more modern deeds.

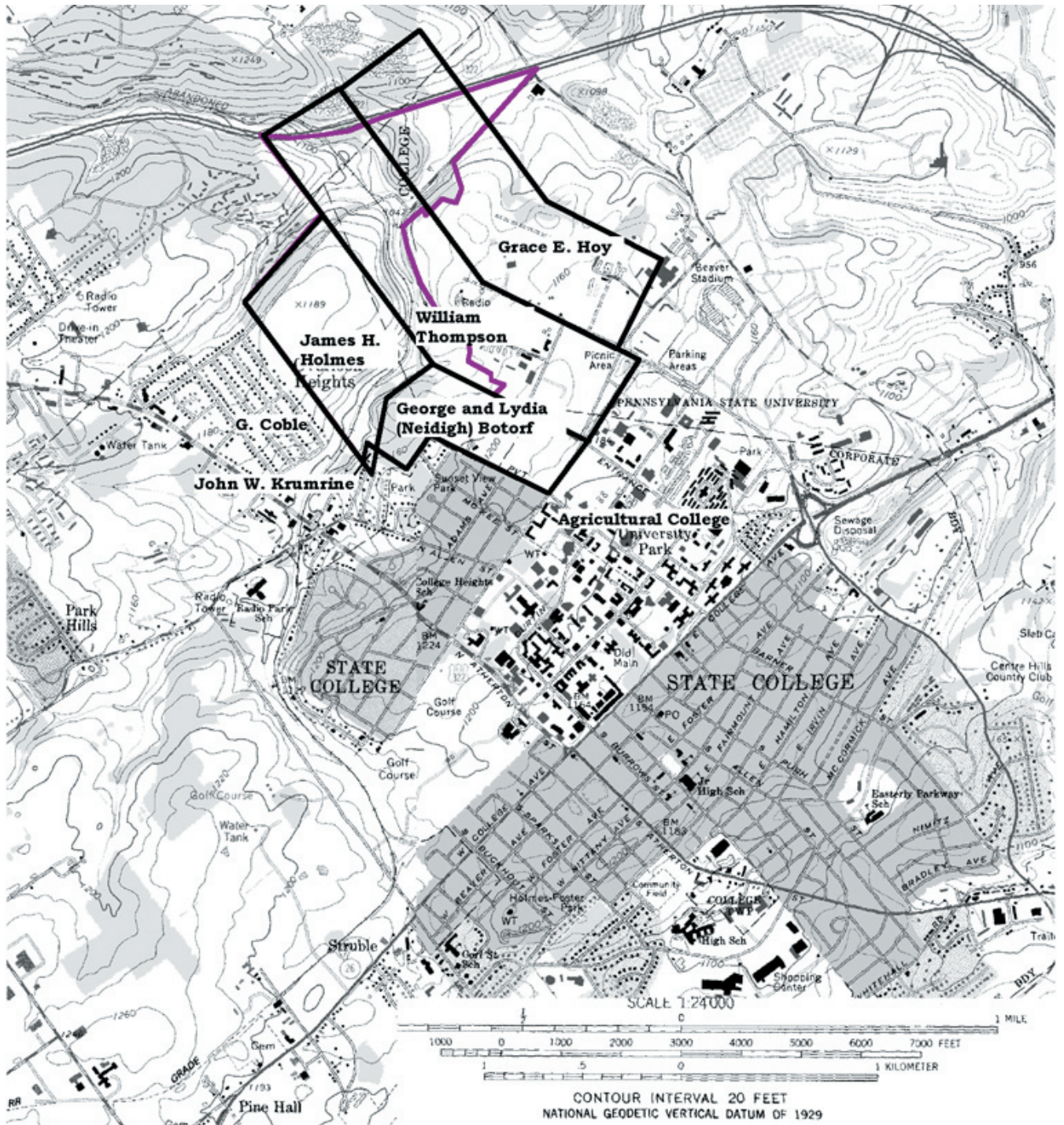
This map is of the property boundaries as of 1860. The purple line is the boundary of the proposed arborum. The heavy black lines are the property boundaries as described in the deeds.



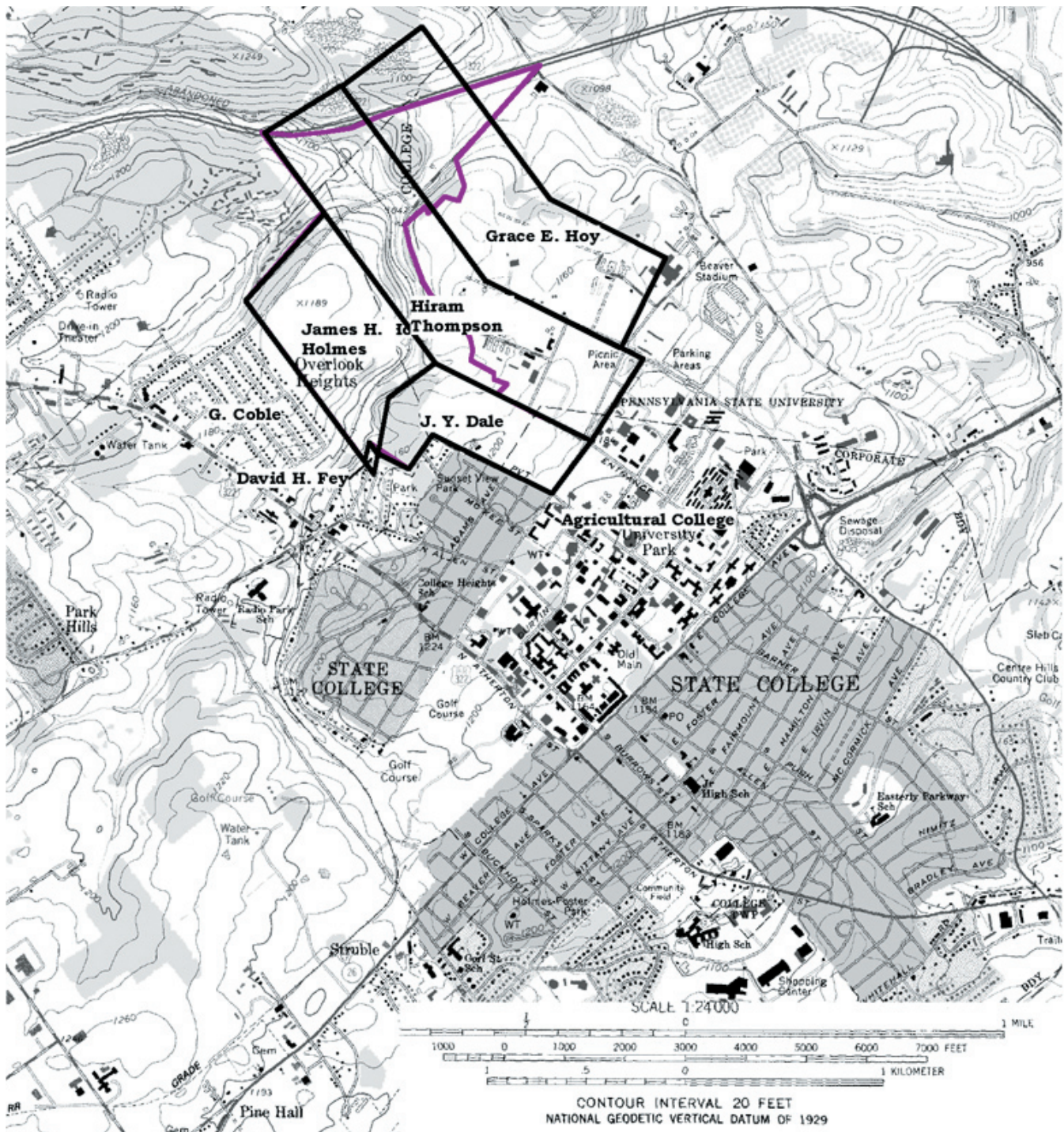
1870: John Neidigh has died; his two daughters, Margaret Hartwick and Lydia Neidigh (later to become Bortorf) inherited his land. This land, plus that of John Krumrine to the south, made up the disputed Hartley warrant. The Mitchell Tract is part of this land. The Rocky Tract is owned by James H. Homes, the Thompson tract is owned by William Thompson and the Foster Farm is controlled by John M. Dale.



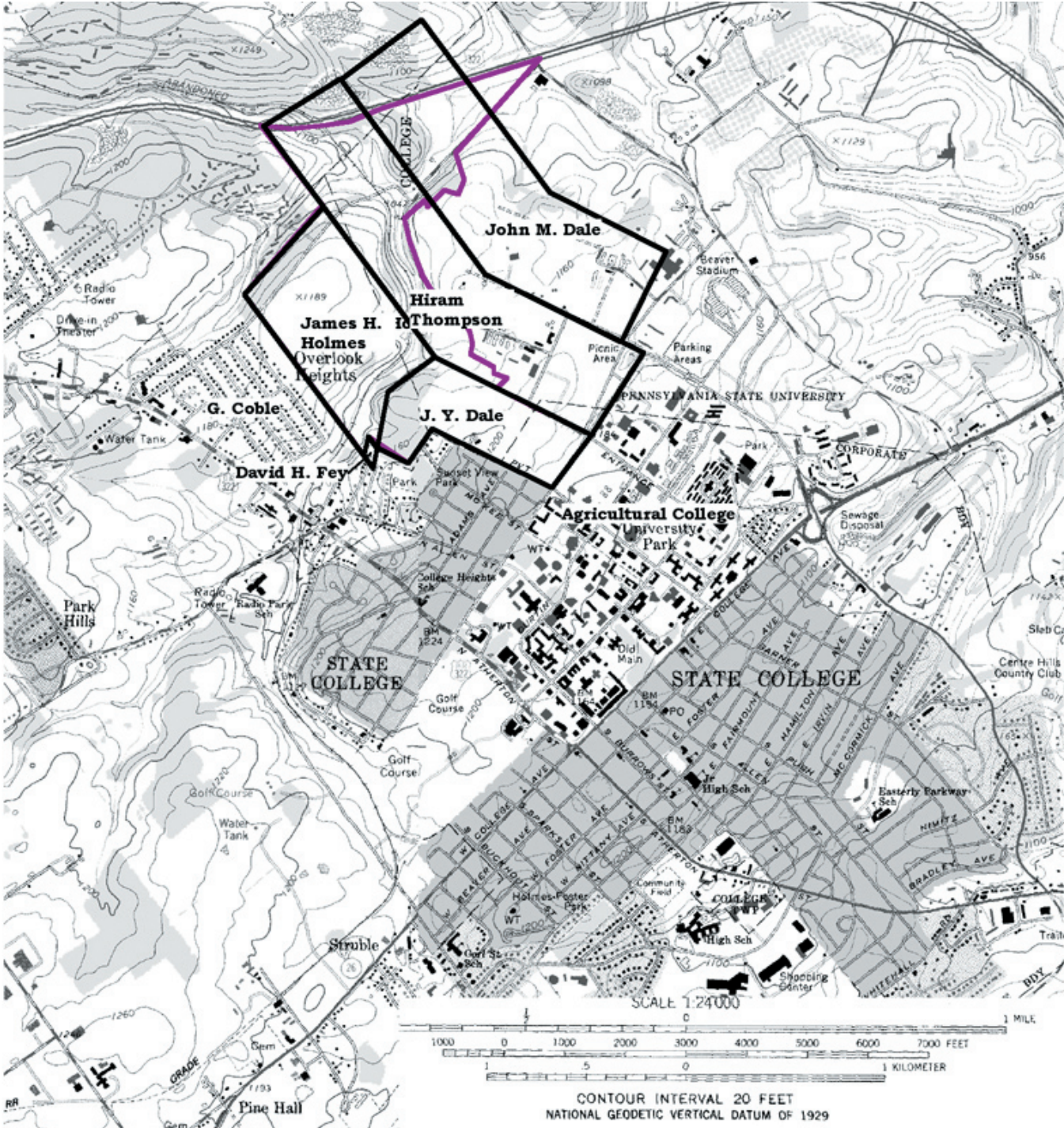
1890: The land that Margaret Hartswick and Lydia Neidigh has been broken into two pieces. Lydia (married to George Botorf) owns what is now called the Mitchell Tract.



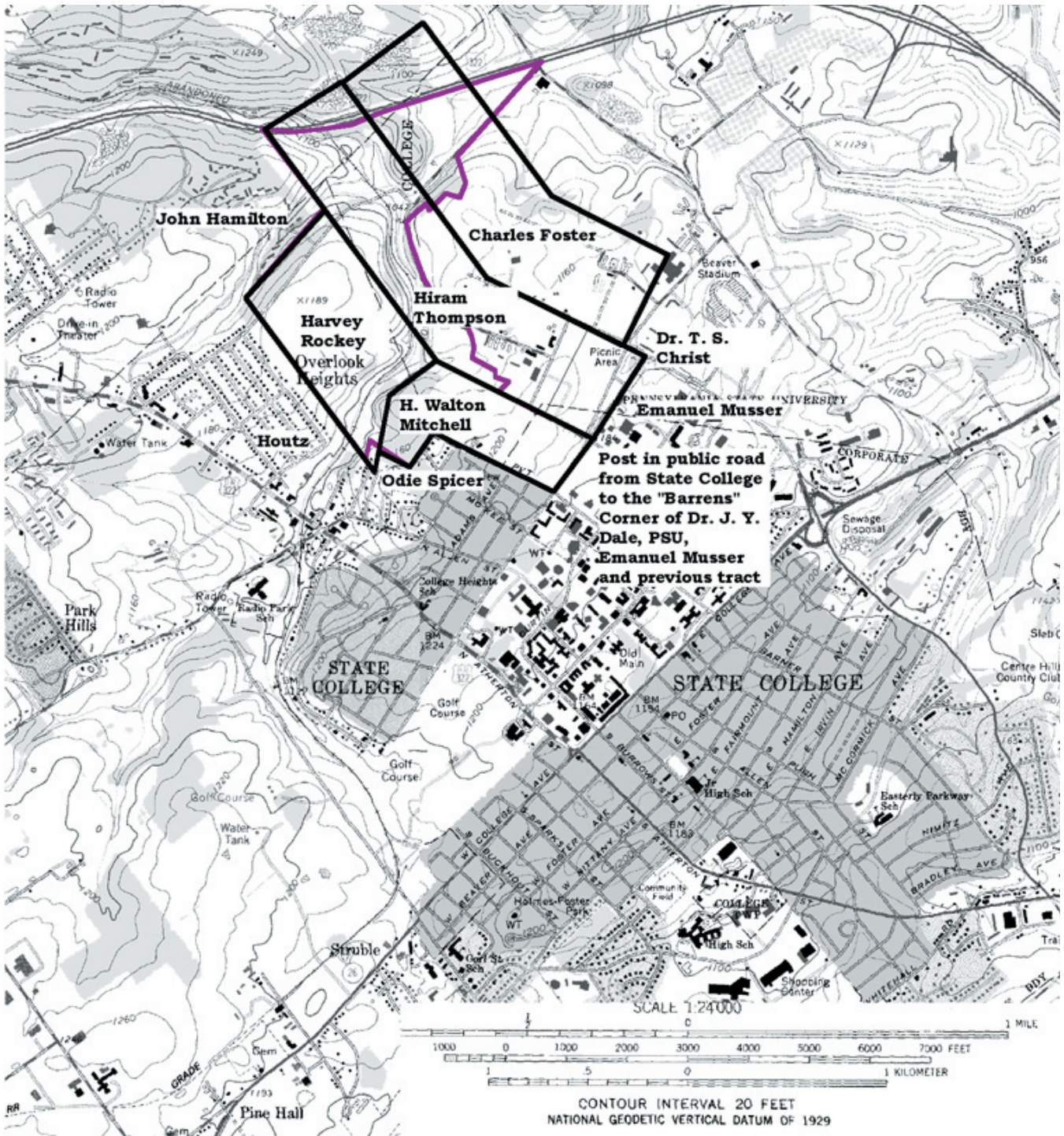
1890: Hiram Thompson owns the Thompson tract, which stays in his possession until his death in 1922.



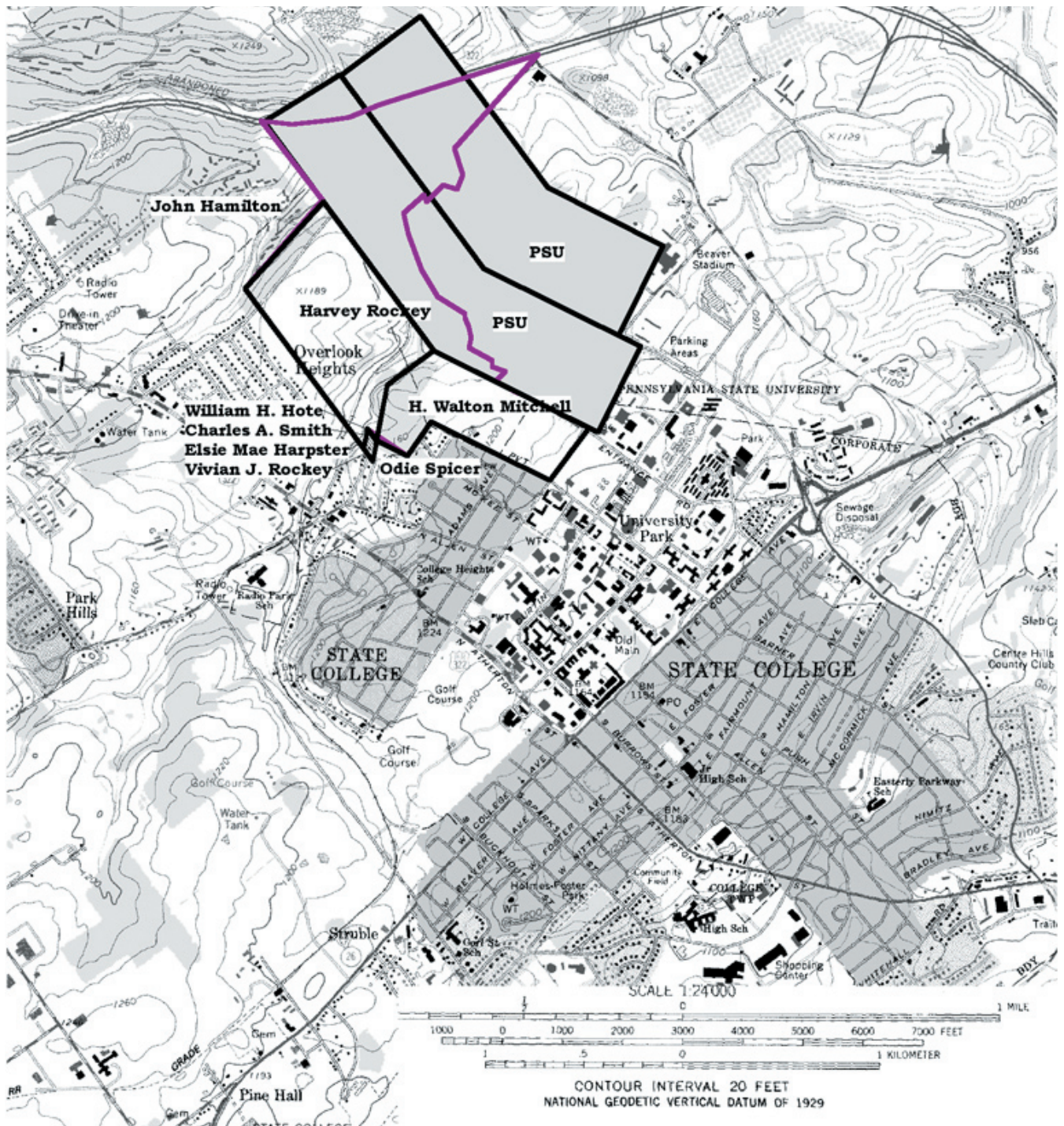
1900: John M. Dale has bought the Foster farm from Grace Hoy.



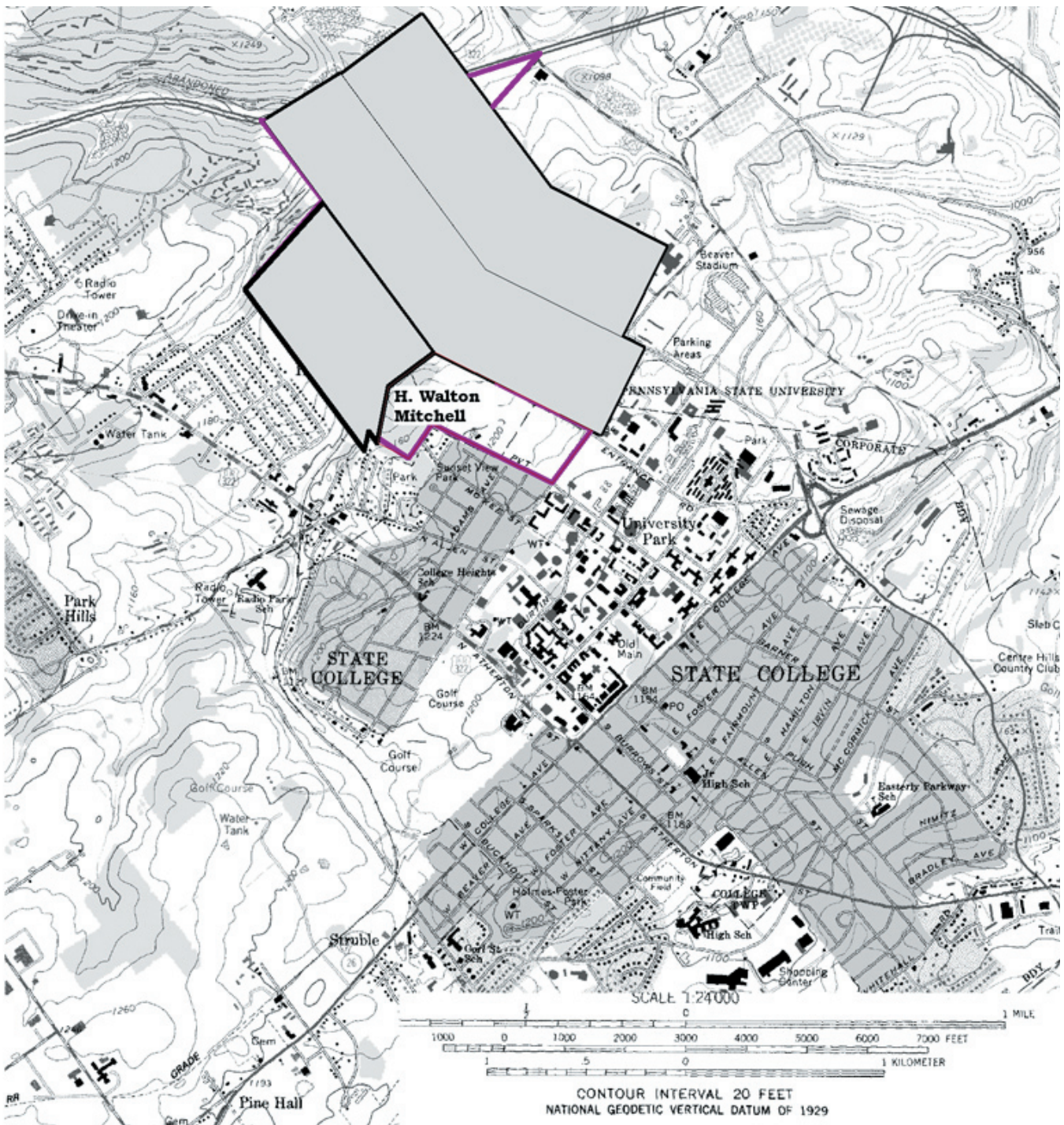
1930: Penn State has not yet bought any of the tracts.



1940: Penn State has purchased the Thompson and Foster tracts (shown in grey).



1950: The only tract that Penn State does not own is the Mitchell Tract, which it acquires in 1989.



Appendix B: Property Descriptions

Mitchell Tract

*Sale of tract from Jean Armstrong and Anne McCloskey to Pennsylvania State University
January 17, 1989*

Begin at a corner stone

along land of:				p	<i>ft</i>	
Margaret Hartswick	N	65.75	W	131.3	<i>2166.45</i>	to stones
Margaret Hartswick	S	33	W	42.2	<i>696.3</i>	to stones
Margaret Hartswick	N	65.75	W	40	<i>660</i>	to stones
James H. Holmes	N	9.75	E	56.04	<i>924.66</i>	
James H. Holmes	N	49.5	E	58	<i>957</i>	
John Hoy and T. Budinger	S	65.75	E	180	<i>2970</i>	
PSU experimental farm	S	34.75	W	66.04	<i>1089.66</i>	

*Sale of tract from Thomas Budinger to H.
Walton Mitchel September 16, 1907*

Begin at a corner stone

along land of:				p	<i>ft</i>	
Margaret Hartswick	N	65.75	W	131.3	<i>2166.45</i>	to stones
Margaret Hartswick	S	33	W	42.2	<i>696.3</i>	to stones
Margaret Hartswick	N	65.75	W	40	<i>660</i>	to stones
James H. Holmes	N	9.75	E	56.04	<i>924.66</i>	
James H. Holmes	N	49.5	E	58	<i>957</i>	
John Hoy and T. Budinger	S	65.75	E	180.1	<i>2971.65</i>	
PSU experimental farm	S	34.75	W	66.04	<i>1089.66</i>	

Note: The measurement perch (p) is equal to one rod or 16.5 feet. A perch can also be a measurement of area equal to one square perch (272.25 square feet). The measurement in feet, when in italics, is a calculated measurement and not expressed in the deed.

*Sale of tract from J. Y. Dale to T. B. Budinger
July 19, 1904*

Begin at a corner stone

along land of:				p	ft	
Margaret Hartswick	N	65.75	W	131.3	2166.45	to stones
Margaret Hartswick	S	33	W	42.2	696.3	
Margaret Hartswick	N	65.75	W	40	660	
James H. Holmes	N	9.75	E	56.04	924.66	
James H. Holmes	N	49.5	E	58	957	
John Hoy and T. Budinger	S	65.75	E	180.1	2971.65	
PSU experimental farm	S	34.75	W	66.04	1089.66	

88 acres 147.5 perches

*Sale of tract from George Bottorf to Dr. J. Y.
Dale March 27, 1882*

Begin at a corner stone

along land of:					p	ft	
Margaret Hartswick	N	65.75	W	131.3	2166.45	to stones	
Margaret Hartswick	S	33	W	42.2	696.3		
Margaret Hartswick	N	65.75	W	40	660		
James H. Holmes	N	9.75	E	56.04	924.66		
James H. Holmes	N	49.5	E	58	957		
John Hoy and T. Budinger	S	65.75	E	180.1	2971.65		
PSU experimental farm	S	34.75	W	66.04	1089.66		

*Sale of tract from H. R. Hartswick to
Lydia Neidigh May 18, 1875*

				p	ft	
	N	65.75	W	131.3	2166.45	to stones
	S	33	W	42.2	696.3	
	N	65.75	W	40	660	
	N	9.75	E	56.04	924.66	
	N	49.5	E	58	957	
	S	65.75	E	180.1	2971.65	
	S	34.75	W	66.04	1089.66	

part of a larger tract

*Tract inherited by Margaret Hartswick
& Lidia Neidigh 1867*

Begin at stones

along land of:			p	ft	
The Agricultural College	S	36.5	W 156.6	2583.9	
John Krumrine	N	68.5	W 160	2640	
George Goble	N	65.5	E 20.6	339.9	
George Goble	N	12.25	E 103	1699.5	
James Holmes	N	51.5	E 58	957	
Lock Haven Bank	S	63.5	E 173.2	2857.8	to beginning

172 acres 66 perches

*Sale of tract from Fredrich Krumrine to John
Neidigh 1838*

Begin at the white oak

along land of:			p	ft	
Irvin J. Houston	S	51.5	W 58	957	to white oak stump
	S	11.75	W 103	1699.5	to a white oak
	S	63.5	W 20.6	339.9	to stones
J. Krumrine	S	20	E 161.8	2669.7	to stones
said Houston	N	35	E 156.6	2583.9	to stones
			173.2	2857.8	to beginning

163 acres 100 perches

part of a larger 490 acre 103 perch tract

*Sale of tract from James Hartely to
Frederick Krumrine December 20, 1837*

Begin at a pine, thence by vacant land all
around

			p	ft	
	N	10	E 94	1551	to a white oak
	N	35	E 94	1551	to a white pine
	N	64	E 154	2541	to a white oak
	N	10	E 101	1666.5	to a white oak
	N	49	E 45	742.5	to a white oak
	S	65	E 162	2673	to a pine
	S	35	W 367	6055.5	to a white oak
			W 209	3448.5	to beginning

467 acres 28 perches

Harvey Rockey Tract

Sale of tract from estate of Harvey Rockey to Penn State Dec. 30, 1946

Begin at the stone along the old rail fence at the SE corner of the lands belonging to Milton Shuey

along land of:

			p	ft	
Milton Shuey, John Spicer (formerly Maria Shuey) and John Hamilton	N	32 40' W **		3438	to a post, crossing Bellefonte Central Rail Road and a public highway
John Hamilton		44 56' E **		1942	to corner stone common to the land of C. H. Foster
C. H. Foster	S	32 40' E **		3080	to a post at the corner of land belonging to H. Walton Mitchel, recrossing the public highway and Bellefonte Central Rail Road
H. Walton Mitchel	S	55 41' W **		957.4	to stones
H. Walton Mitchel	S	16 50' W **		980.8	to a stone
Odie Spicer		**		300	to place of beginning

containing 130 acres

Excepting the following:

William H. and Marie Rote

deed book 186 p322

begin at post at the NW corner of lands belonging to Charles A. Smith

			p	ft	
Harvey Rockey	N	E **		50	to a pin at the corner of land belonging to Harvey Rockey
Harvey Rockey	S	E **		250	to a pin and lands belonging to Odie Spicer
Odie Spicer	S	W **		50	to a pin and lands belonging to Charles A. Smith
Charles A. Smith	N	W **		250	to beginning

Note: the symbol ** shows that the measurement in perches was not expressed in the deed

Vivian J. Rockey

deed book 183 p140

Begin at a stone at the SE corner of land belonging to Orrie Houtz (formerly Milton Shuey)

along land of:			p	ft	
Orrie Houtz	N	32 40'	W **	250	to a stake
Harvey Rockey			E **	100	to a stake
Harvey Rockey	S	32 40'	E **	250	to land belonging to Odie Spicer
Odie Spicer			W **	100	to beginning

Charles A. Smith

deed book 186 p118

Begin at the NW corner of lands belonging to the now or late Elsie Mae Harpster

along land of:			p	ft	
Harvey Rockey	N		E **	50	to lands belonging to Harvey Rockey
Harvey Rockey	S		E **	250	to a pin and lands belonging to Odie Spicer (now or late)
Odie Spicer	S		W **	50	to lands belonging to Elsie Mae Harpster
Elsie Mae Harpster	N		W **	250	to beginning

Elsie Mae Harpster

deed book 186 p124

Begin at a post at the NW corner of lands belonging to the now or late Vivian Rockey

along land of:			p	ft	
Harvey Rockey	N		E **	50	to a pin and land belonging to Charles A. Smith
Charles A. Smith	S		E **	250	to land belonging to Odie Spicer
Odie Spicer	S		W **	50	to land belonging to Vivian Rockey
Vivian Rockey	N		E **	250	to beginning

Sale of tract from James H. Holmes to Harvey Rockey Mar. 16, 1920

Begin at the stone along the old rail fence at the SE corner of lands belonging to Milton Shuey

			p	ft	
along land of:					
Milton Shuey, John Spicer (formerly Maria Shuey) and John Hamilton	N	32 40'	W **	3438	to a post, crossing Bellefont's Central Rail Road and a public highway
John Hamilton		44 56'	E **	1942	to corner stone common to the land of C. H. Foster
C. H. Foster	S	32 40'	E **	3080	to a post at the corner of land belonging to H. Walton Mitchel, recrossing the public highway and Bellefonte Central Rail Road
H. Walton Mitchel	S	55 41'	W **	957.4	to stones
H. Walton Mitchel	S	16 50'	W **	980.8	to a stone
Odie Spicer			**	300	to place of beginning

containing 130 acres

Sale of tract from William Blair to James H. Holmes May 2, 1864

Begin at stones on a line of the land belonging to Lock Haven Bank

				p	ft	
	S	36	E	186.3	3074	to white oak stump
along land of:	S	54	W	57.6	950.4	to stones
Lock Haven Bank	S	11.5	W	65.4	1079	to stones
John Neidigh	N	36	W	10.8	178.2	to stones
John Neidigh	S	54	W	10	165	to stones
William Blair	N	36	W	196	3234	to stones
William Blair	N	42.75	E	118	1947	to beginning
George Coble						
the Thompson Co.						

containing 135 acres

Seizure of tract from William Blair Sep.

12, 1856

Begin at stones

along land of:			p	ft	
George Coble	N	37	W 216	3564	to stones
George Coble	N	41.25	E 118	1947	
George Coble	S	37	E 187	3086	to white oak stump
John Neidigh	S	53	W 57.3	945.5	to stones
John Neidigh	S	10.5	W 79	1304	to beginning

containing 135a 140p

Sale of tract from James Irvin to

William Blair March 15, 1851

along land of:			p	ft	
George Coble	N	37	W 216	3564	
Centre Furnace lands	N	41.25	E 118	1947	
Centre Furnace lands	S	37	E 187	3086	
John Neidigh	S	53	W 57.3	945.5	
John Neidigh	S	10.5	W 79	1304	

Charles Foster Farm

*Sale of tract from the Bellefonte Trust Company
to Penn State University Dec. 10, 1935*

Begin at stones at the corner of PSU lands

along land of:				p	ft	
(Former) James Chambers	N	23	E	100	1650	to stones
(Former) Moses Thompson	N	67	W	177	2920.5	to stones
	N	40	W	242	3993	to pine knob
(Former) Centre Furnace Lands	S	55	W	89.4	1475.1	to stones
(Former) Centre Furnace Lands and William Blair	S	40	E	286.8	4732.2	to white oak stump
(Former) John Neidigh	S	67	E	178.3	2942	to beginning

Excepting:

Begin at a post in the public road from State College to the Barrens, at the corner of lands belonging to Dr. J. Y. Dale, Penn State University, Emanuel Musser and the previous tract.

along land of:				p	ft	
Emanuel Musser and the Previous tract	N	29.5	E	101.3	1671.5	to stones on the corner of land belonging to Dr. T. S. Christ
Dr. T. S. Christ and Hiram Thompson	N	61.25	W	64.6	1065.9	to a post
Previous tract and a public road	S	29.5	W	100	1650	to a post
Dr. J. Y. Dale	S	60	E	64.6	1065.9	to the beginning

*Sale of tract from Grace E. Hoy to Charles Foster
March 18, 1910*

Begin at stones at the corner of PSU lands

along land of:				p	ft	
(Former) James Chambers	N	23	E	100	1650	to stones
(Former) Moses Thompson	N	67	W	177	2920.5	to stones
(Former) Moses Thompson	N	40	W	242	3993	to pine knob
(Former) Centre Furnace Lands	S	55	W	89.4	1475.1	to stones
(Former) Centre Furnace Lands and William Blair	S	40	E	286.8	4732.2	to white oak stump
(Former) John Neidigh	S	67	E	178.3	2942	to beginning

Excepting:

Begin at a post in the public road from State College to the Barrens, at the corner of lands belonging to Dr. J. Y. Dale, Penn State University, Emanuel Musser and the previous tract.

along land of:			p	ft	
Emanuel Musser and the Previous tract	N	29.5	E 101.3	1671.5	to stones on the corner of land belonging to Dr. T. S. Christ
Dr. T. S. Christ and Hiram Thompson Previous tract and a public road	N	61.25	W64.6	1065.9	to a post
Dr. J. Y. Dale	S	29.5	W100	1650	to a post
	S	60	E 64.6	1065.9	to the beginning

Sale of tract from John M. Dale to Dr. H. K.

Hoy Dec. 31, 1898

Beginning at stones at the corner of lands belonging to the Farmer's High School

along land of:				p	ft	
(Former) James Chambers	N	23	E 100	1650		
Moses Thompson	N	67	W	177	2920.5	
Moses Thompson	N	40	W	242	3993	to pine knob
Centre Furnace	S	55	W	89.4	1475.1	
Centre Furnace and William Blair	S	40	E	286.8	4732.2	to white oak stump
John Neidigh	S	67	E	178.3	2942	to beginning

Hiram Thompson Farm

*Sale of tract from the Thompson Estate to
Penn State March 20, 1922*

Begin at a stone common to the land of the
late Moses Thompson

along land of:				p	ft	
Moses Thompson and the Centre Furnace	N	67	W	132	2178	to stones
Moses Thompson and the Centre Furnace	N	40	W	215	3547.5	to stones
Moses Thompson and the Centre Furnace	S	50	W	100	1650	to stones
Lock Haven Bank	S	40	E	242	3993	
Lock Haven Bank	S	67	E	152	2508	to stones
(Former) Moses Thompson	N	23	E	100	1650	to beginning

*Sale of tract from William Thompson to
Hiram Thompson May 10, 1890*

Begin at a stone common to the land of the
late Moses Thompson

along land of:				p	ft	
Moses Thompson and the Centre Furnace	N	67	W	132	2178	to stones
Moses Thompson and the Centre Furnace	N	40	W	215	3547.5	to stones
Moses Thompson and the Centre Furnace	S	50	W	100	1650	to stones
Lock Haven Bank	S	40	E	242	3993	
Lock Haven Bank	S	67	E	152	2508	to stones
(Former) Moses Thompson	N	23	E	100	1650	to beginning

*Sale of tract from Horatio Fisher to William
Thompson April 20, 1869*

Begin at a stone common to the land of the
late Moses Thompson

along land of:				p	ft	
Moses Thompson and the Centre Furnace	N	67	W	132	2178	to stones
Moses Thompson and the Centre Furnace	N	40	W	215	3547.5	to stones
Moses Thompson and the Centre Furnace	S	50	W	100	1650	to stones
Lock Haven Bank	S	40	E	242	3993	
Lock Haven Bank	S	67	E	152	2508	to stones
(Former) Moses Thompson	N	23	E	100	1650	to beginning

Also, the opportunity to make, open and use a road from the line first mentioned
Along land of Moses Thompson N 37 W to a point. Not to exceed 27 rods from the corner at the begin-
ning. In a direct course to intersect with the public road from the Centre Furnace to Buffalo Run, NE of
said tract.

Sale of tract from John S. Isett to Horatio Fisher May 15, 1866

Begin at a stone common to the land of the late Moses Thompson

along land of:				p	ft	
Moses Thompson and the Centre Furnace	N	67	W	132	2178	to stones
Moses Thompson and the Centre Furnace	N	40	W	215	3547.5	to stones
Moses Thompson and the Centre Furnace	S	50	W	100	1650	to stones
Lock Haven Bank	S	40	E	242	3993	
Lock Haven Bank	S	67	E	152	2508	to stones
(Former) Moses Thompson	N	23	E	100	1650	to beginning

Being part of a larger tract composed of several surveys known as the Centre Furnace Lands.

Sale of tract from Moses Thompson to John Isett April 27, 1860

Begin at a stone common to the land of the late Moses Thompson

along land of:				p	ft	
Moses Thompson and the Centre Furnace	N	67	W	132	2178	to stones
Moses Thompson and the Centre Furnace	N	40	W	215	3547.5	to stones
Moses Thompson and the Centre Furnace	S	50	W	100	1650	to stones
Lock Haven Bank	S	40	E	242	3993	
Lock Haven Bank	S	67	E	152	2508	to stones
(Former) Moses Thompson	N	23	E	100	1650	to beginning

Appendix D: Deed Information

Mitchell Tract

Grantor	Grantee	Date	Deed Book/Pg	Notes
Jean Armstrong & Anne McCloskey	PSU	Jan. 17, 1989	R473 p532	
Thomas Budinger	H. Walton Mitchel	Sep. 16, 1907	95 p589	
J. Y. Dale	T. B. Budinger	July 19, 1904	92 p302	
George Bottorf	Dr. J. Y. Dale	March 27, 1882	52 p566	George Bottorf is the husband of former Lydia Neidigh
H. R. Hartswick	Lydia Neidigh	May 18, 1875	K2 p471	part of a larger tract
John Neidigh	Margaret Hartswick & Lydia Neidigh	Sep. 12, 1867	C2 p248	Margaret Hartswick was formerly Margaret Neidigh
John Neidigh	John H. Neidigh			John Neidigh died intestate; John H.
Fredrich Krumrine	John Neidigh	June 30, 1838	Neidigh	inherited
James Hartley	Fredrich Krumrine	Dec. 20, 1837	M p117	part of 490ac tract; vacant land all around patent form # 222, recorded in book C pg 484 of Surveys July 11, 1914
	James Hartley	Dec. 1, 1784		

Harvey Rocky Tract

Grantor	Grantee	Date	Deed Book/Page	Notes
Estate of Harvey Rocky	Penn State	Dec. 30, 1946	191 p381	130 acres
James H. Holmes	Harvey Rocky	Ap. 9, 1920	123 p 296	described as farmland
David H. Fey	James H. Holmes	Mar. 12, 1891	69 p 228	only for 1 acre
John W. Krumrine	David H. Fey	Feb 7, 1888	56 p 175	only for 1 acre
Joseph Blair	John W. Krumrine	Mar. 11, 1878	56 p 173	
James H. Holmes	Joseph Blair	May 12, 1868		inherited; will book C p 346
William Blair	James H. Holmes	May 2, 1864	G2 p 5	for 135 acres
M. P. Crosthwaite	William Blair	Ap. 27, 1860	Ms B p 713	for 135 acres
William Blair	M. P. Crosthwaite	Ap. 1, 1856	U p 545	for 135 acres
James Irvin	William Blair	Mar 15, 1831	U p 294	part of tract known as "Centre Furnace Lands;" for 135 acres

Foster Farm

Grantor	Grantee	Date	Deed Book/Page	Notes
Bellefonte Trust Co.	PSU	Dec. 10, 1935		
Grace E. Hoy	Charles Foster	March 18, 1910	150 p634	
John M. Dale	Dr. H. K. Hoy	April 12, 1905	108 p228	
Sherriff Cronister	John M. Dale	Dec. 31, 1898	Ms O p 230	
John M. Dale	Dr. H. K. Hoy	Feb. 1, 1899	79 p97	land of late H. K. Hoy
			Ms O p 230	
Exception:				
John M. Dale (trustee)	Thomas Budinger	Sep. 14, 1903	91 p100	farmland

Thompson Tract

Grantor	Grantee	Date	Deed Book/Page	Notes
Estate of Hiram Thompson	Penn State	April 4, 1922	126 p 639	231 acres
William Thompson	Hiram Thompson	May 10, 1890	61 p103	sale forced by orphan's court; referred to as a farm
Horatio Fisher	William Thompson	April 20, 1869	L2 p506	
John S. Isett	Horation Fisher	May 15, 1866	126 p637	
Moses Thompson	John S. Isett	April 27, 1860	Ms B p670	part of tract known as "Centre Furnace Lands"

Appendix B: Timeline for the Development of Centre County

Timeline for the Development of Centre County

- Ln 1754 Deed to Six Nations: land including Centre County
- Mc 1758 Centre county is a part of Cumberland County
- Mt 1765 Land (in 300 acre parcels) is bought by Samuel Miles and John Patton
- Mc 1771 Centre County is a part of Bedford County
- Mc 1772 Centre County is a part of Northumberland County
- De 1774 23 tracts are surveyed for Cptn. Hawkins Boone (under several names)
- Ln 1779 A hard winter; most of the settlers in county abandon it
- Ma 1780 Centre County is surveyed to be sold
- Mt 1780 Iron is discovered
- Ln 1786 The first settlement is established in College Township (Robert Moore, on Spring Creek)
- Mc 1789 Centre County is a part of Mifflin County
- De 1790 Tracts in Centre County are aquired by Patton and Miles
- Mt 1791 No permanent settlements have been established in Centre County
- Mt 1791 The "Great Pine Barrens" (most of State College Bourgh) are bought by Samuel Miles and John Patton
- Ch 1792 Centre Furnace is established
- Mi 1795 Centre County is a part of Bald Eagle Township
- Mi 1800 College Township is split between Patton and Potter Townships
- Ru 1800 Centre County is established - pop.2075
- Mt 1801 Boalsburgh Pike is built; it is the first road in Centre County
- Ru 1810 The population of Centre County is 10681
- Mt 1832 John Irvin purchases Centre Furnace Lands
- Mt 1833 Eleven tracts with pine forests are aquired by Centre Furnace (current Park Forest Development)
- Ru 1840 The population of Centre County is 20,492; 7 furnaces are in operation
- Du 1855 This is the "birthdate" of Penn State; it is bounded by Atherton, College and Park Ave.
- Mt 1858 Centre Furnace closes; most of the lands owned by Centre Furnace are being used in farming
- Du 1862 Land grant act
- Du 1867 Penn State purchases experimental farms
- Ln 1875 College Township is formed
- Ln 1877 State College consists only of a dozen or two dwellings and stores
- Ma 1877 Penn State consists of 400 acres; 100 acres are separate from main campus
- Be 1881 Scientific research (the fertility plots) starts
- Du 1885 Experimental farms are discontinued
- Hu 1886 The railroad from Bellefonte ran into Krumrine and on to Strubles (north of town)
- Du 1887 Hatch Act
- Du 1888 The Experiment Station Buliding is built
- Du 1890 A New Dairy Building is built
- Hu 1892 Bellefonte Railroad builds an extension from Krumrine into State College
- Be 1896 The College of Agriculture is created
- Du 1903 A New Dairy Building is built; it is now Patterson Hall
- Du 1907 The Main Agriculture building is completed
- Du 1907 The Department of Forestry is made permanant
- Mt 1907 Penn State begins to aquire lands once owned by Centre Furnace
- ds 1922 Penn State aquires Tract 8 (Hiram Thompson Farm)

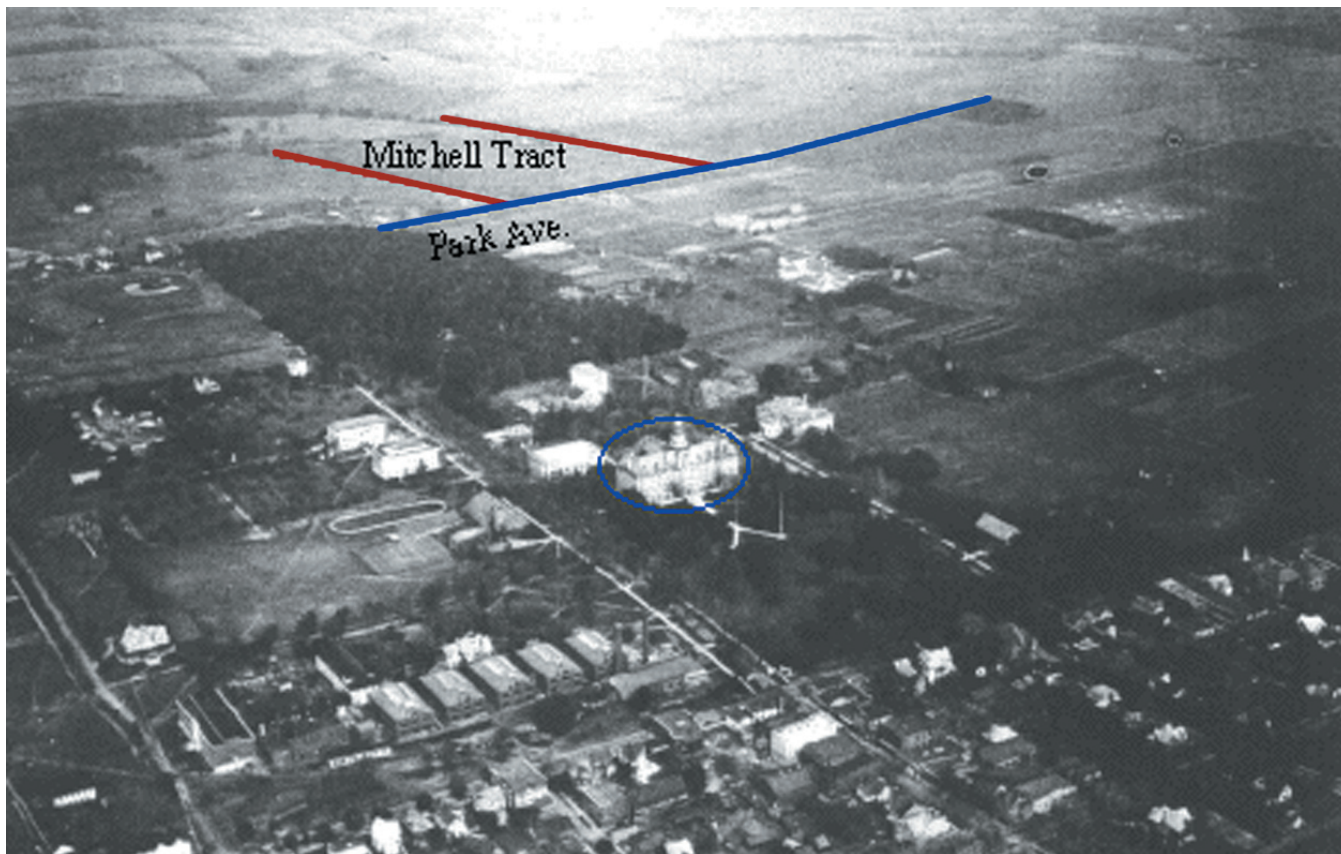
Fe 1927 The first zoning ordinance is passed for State College Borough
 ds 1935 Penn State acquires Tract 13 (Charles Foster Farm)
 ds 1946 Penn State acquires Tract 17 (Harvey Rockey Tract)
 Be 1970 639 Kennard Rd is purchased to be the Penn State President's residence
 Be 1974 The Master Plan is approved
 ds 1988 Penn State acquires Tract 32 (Mitchell Tract)

The symbols in the far left column refer to the source of that particular date/event. The table below shows each symbol next the source to which it refers.

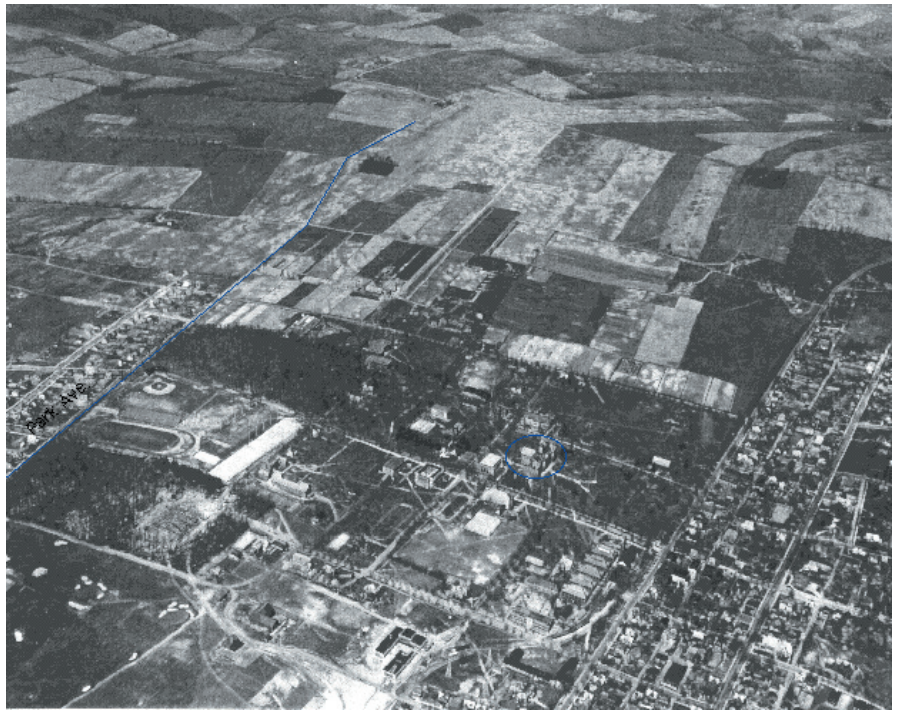
Be	Bezilla, Michael <i>Penn State; an Illustrated History</i>
Ch	Chalana, Manish <i>The Landscape of Charcoal Iron: Finding and Retaining the Landscape history of Centre Furnace in the Face of Change</i>
De	Deasy GeoGraphics Lab <i>The Early History of the Centre Region</i>
ds	deed search
Du	Dunaway, Wayland Fuller <i>History of the Pennsylvania State College</i>
Fe	Ferree, Walter Lincoln <i>An Introduction to the History of State College, Pennsylvania</i>
Hu	Hughes, William Pitten <i>Centre County Railroad Development and Progress, 1850 - 1900</i>
Ln	Linn, John Blair <i>History of Centre and Clinton Counties, Pennsylvania</i>
Ma	Maynard, D. S. <i>Industries and Institutions of Centre County: with historical sketches of principal villages</i>
Mc	MacNeal, W. Douglas <i>Centre County Heritage</i>
Mi	Mitchell, J. Thomas <i>Centre County: From its Earliest Settlement to the Year 1915</i>
Mt	Mitchell, Thomas <i>The Borough of State College: Its Origenes and Growth</i>
Ru	Rupp, I. Daniel <i>History of Northumberland . . . Centre Counties</i>

Appendix E: Photographs

State College, 1916. Old Main on the Penn State campus and Park Ave. are highlighted in blue, as they will be in the following photographs. The burgundy lines show visible property boundaries of the tracts in the arboretum. The woodlot seen in the upper left of this photograph is the woodlot that is on the Mitchell Tract and in Sunset Park.

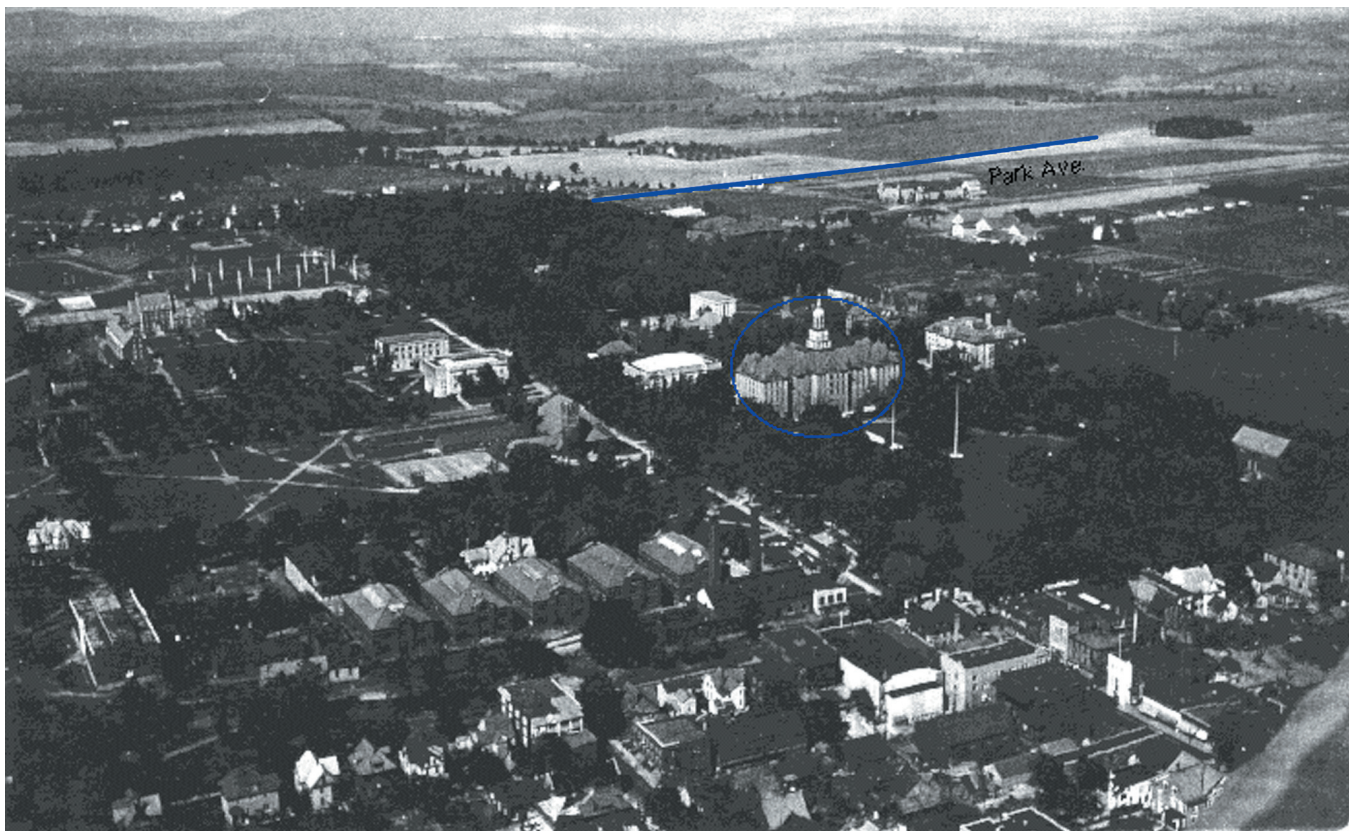


Note: All photographs were found in the Pennsylvania State University archives.



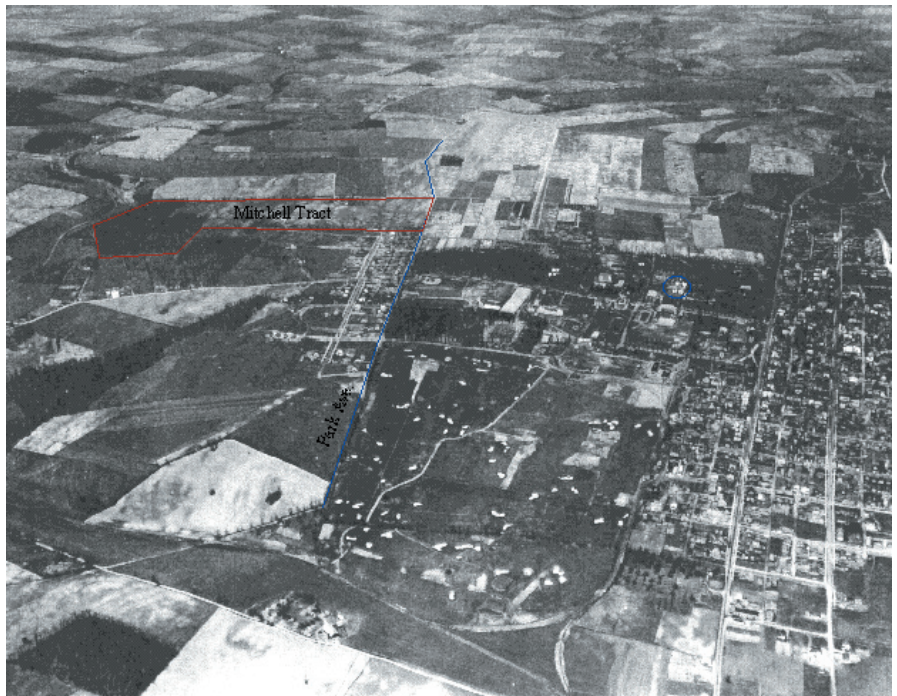
Upper photograph: 1922.
Lower photograph: 1925

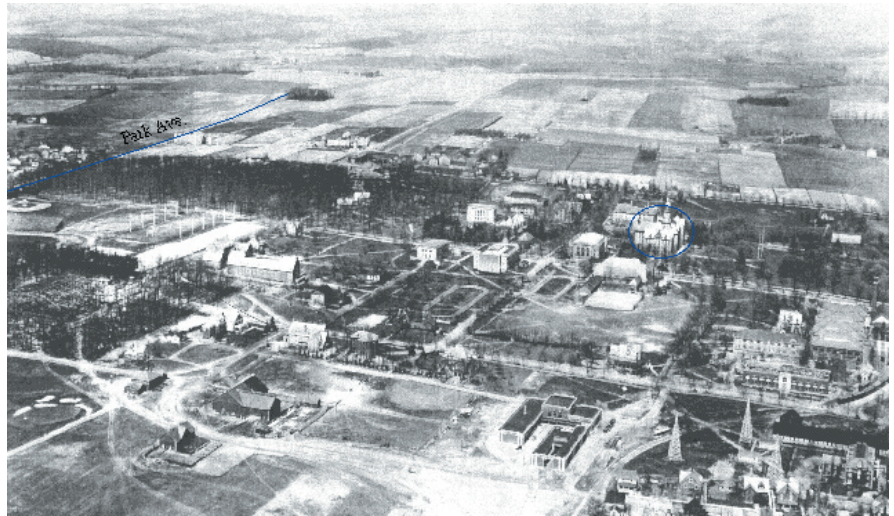
Notice on both pictures that north of Park Ave. is a patchwork of farms. Hedgerows are more prominent than in the 1916 photograph.





Both photographs are from 1925. On the lower photograph, the outline of the Mitchell Tract is clearly visible.

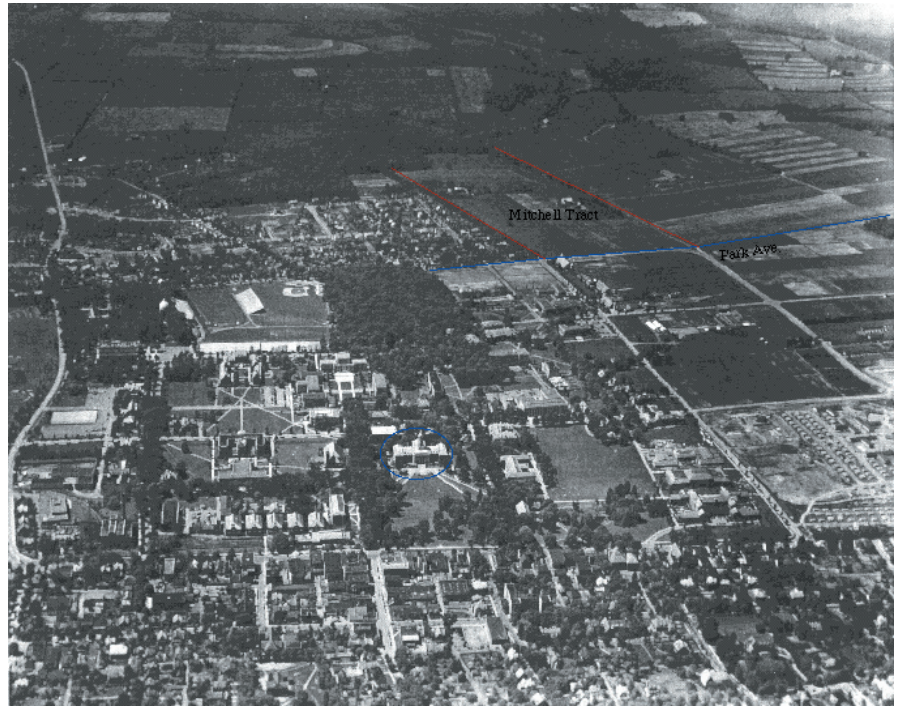




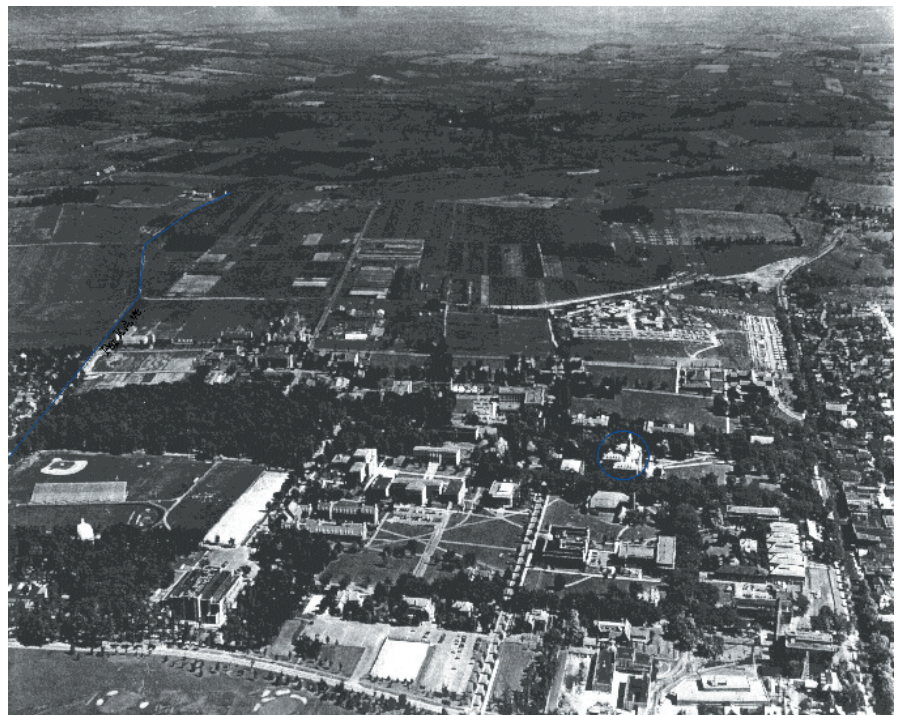
The upper photograph is from 1928. You can see that the land outside of State College is still farmland.

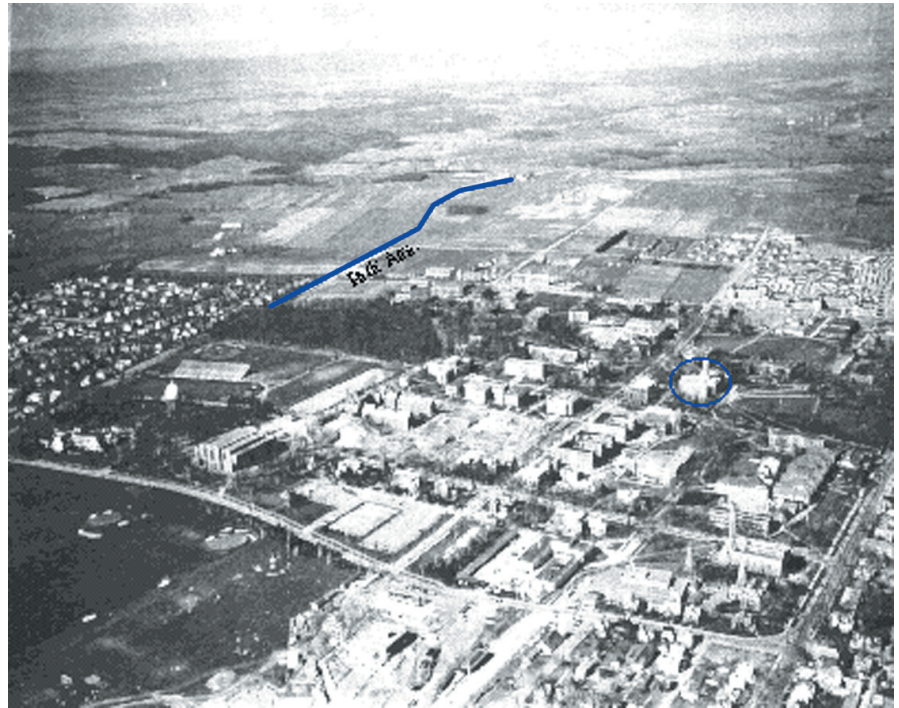
The lower photograph is an aerial photograph from 1935. The outline of several of the arboretum tracts are clearly visible. From this vantage point, we see that the arboretum lands are comprised of fields and woodlots.





Both photographs are from 1943. The woodlot on the Mitchell Tract is visible on the upper photograph.





The above photograph is from 1949. Although State College is growing, this photograph shows that the land surrounding State College is still farmland.



Appendix F: Bibliography

Bibliography

- Bezilla, Michael. (1985). Penn State; an Illustrated History. Pennsylvania State University Press: University Park, PA
- Bracken, John R. (1945). Planting Design: principles and practices in the use of planting materials by the landscape architect. diss. University of Michigan (State College, 1957)
- Centre County Planning Commission, (1972). Historical Reflections of Centre County, 1970. Bellefonte, PA
- Chalana, Manish. (1999). The Landscape of Charcoal Iron: Finding and Retaining the Landscape history of Centre Furnace in the Face of Change. Pennsylvania State University: Thesis
- Correll, Philip G. (1980). Botanical Gardens and Arboreta of North America: an organizational survey. American Association of Botanical Gardens and Arboreta: Los Angeles, CA.
- Deasy GeoGraphics Lab, (1996). The Early History of the Centre Region. Bellefonte, PA
- Dunaway, Wayland Fuller. (1946). History of the Pennsylvania State College. Pennsylvania State College: State College, PA.
- Hench, Vivian Doty. (1948). The History of State College. Centre Daily Times Publications: State College, PA.
- Hughes, William Pitten. (1977). Centre County Railroad Development and Progress, 1850 - 1900. Pennsylvania State University: Thesis.
- Lee, J. Marvin. (1965). Centre County: The County in Which We Live. State College PA.
- Linn, John Blair. (1975). History of Centre and Clinton Counties, Pennsylvania. Unigraphic, Inc.: Evansville, Indiana.
- Little, Pat, (1999). Penn State Then and Now. Pat Little Photography: Lemont PA.
- Lowrie, Charles N. (1907). A Report and Plan for the Campus and Grounds of the Pennsylvania State University. Pennsylvania State College: State College.
- MacNeal, W. Douglas. (1996). Centre County Heritage. Centre County Historical Society: State College PA.
- MacNeal, W. Douglas. (2002). Personal Interview Jan. 29, 2002.
- Maynard, D. S. (1877). Industries and Institutions of Centre County: with historical sketches of principal villages. State College PA.
- Mitchell, J. Thomas. (1915). Centre County: From its Earliest Settlement to the Year 1915. State College PA.

Mitchell, Thomas. (1941). The Borough of State College: Its Origins and Growth. Typed transcript. State College PA; 1941.

Moore, Thomas H. (1941). Centre Furnace Lands Co. property held in and about State College just prior to the partition deed of 1857 map State College, Pa.

Rupp, I. Daniel. (1847). History and topography of Northumberland, Huntingdon, Mifflin, Centre, Union, Columbia, Juniata and Clinton counties, Pa.. G. Hill: Lancaster, PA.

Stevens, Sylvester Kirby. (1985). The Centre Furnace story : a return to our roots. Centre County Historical Society: State College PA.

Stout, Lee. Arboretum Cronology.

Van Schaik, Mary Mattison. (1971). The Gardens and Arboretum of Smith College. Nimrod Press: Boston, MA.